



WAS Co.

WORLDWIDE
ACCOUNTABILITY
SOLUTIONS

PITCH DECK

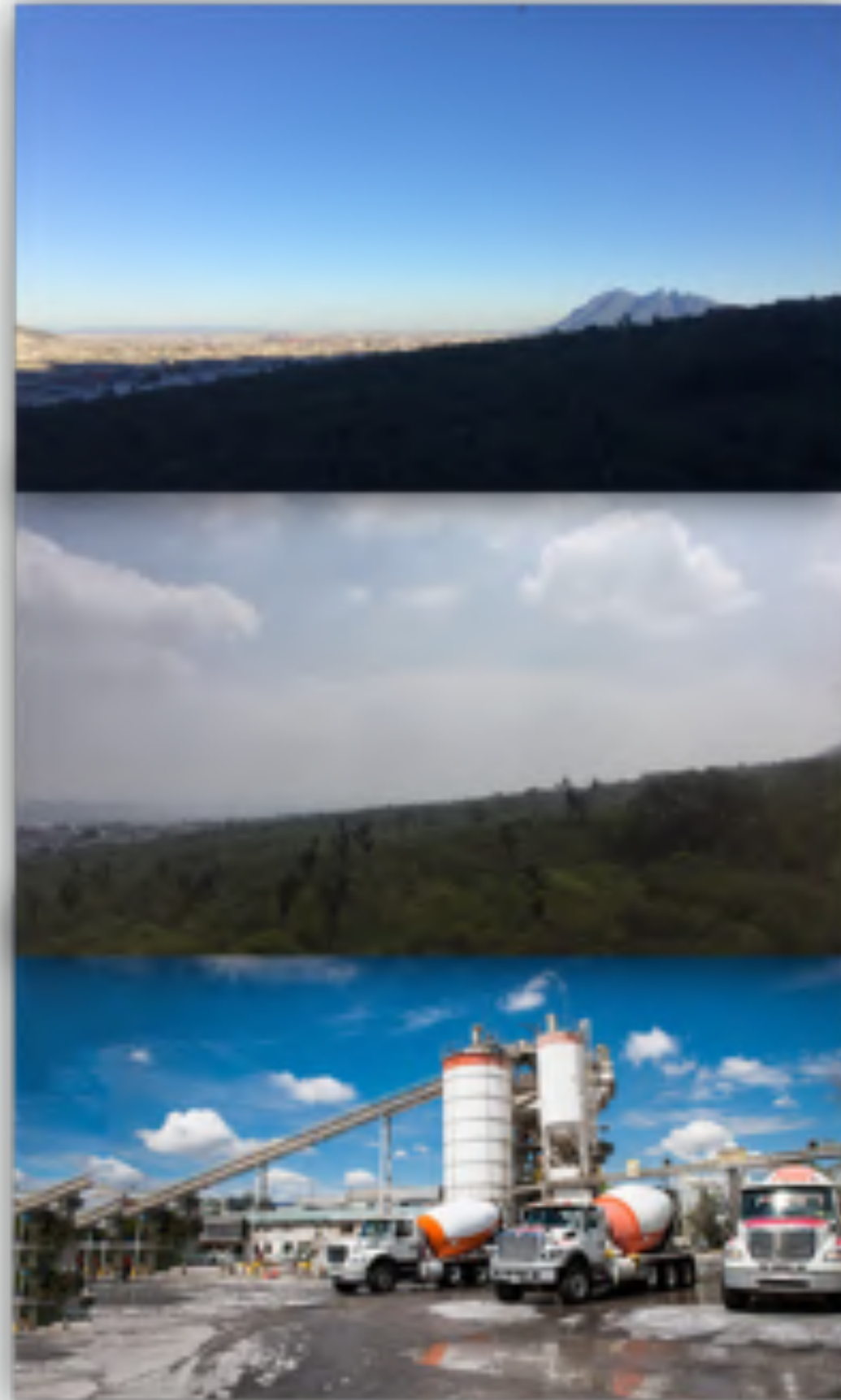
AEPW LATAM Selection Day

www.wascompany.com

PROBLEM

WAS CO MEXICO

- In 2050 there will be more plastics than fish in the oceans.
- Environmental pollution and poor air quality from quarries and cement plants in my city (Monterrey, the most polluted city in Mexico and Latin America).
- Lack of accessible housing for a safe and good life quality.
In Mexico more than 50 million people lack decent housing and in the world there are more than 1 billion)



SOLUTION

WAS CO MEXICO

We transform plastic waste to create new polymer compounds with high properties and characteristics adapted to structural and non-structural building materials, to be able to build from social housing, schools, clinics, to soccer stadiums.

www.wascompany.com





WAS COMPANY

WORLDWIDE ACCOUNTABILITY SOLUTIONS



Founded 2017

Shareholders:

Products Development

Patents:

www.wascompany.com

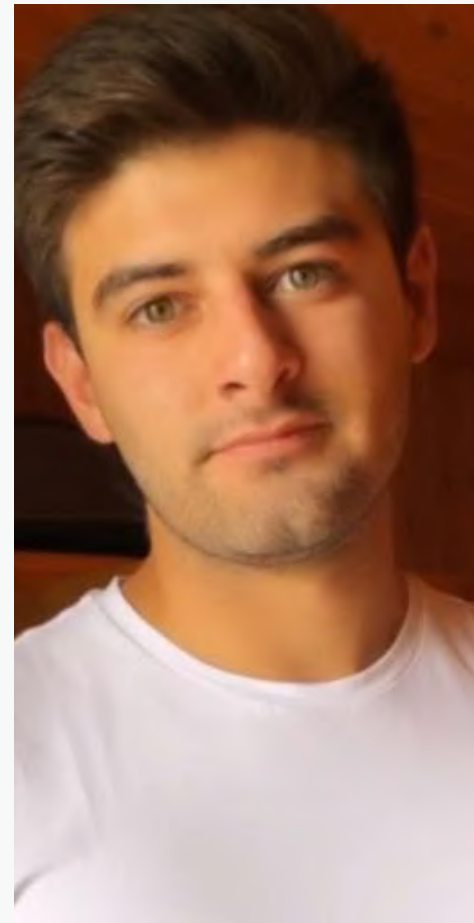
BOARD DIRECTORS

WAS COMPANY



Walter Mata

President/Founder/
CEO WAS Co



*Ing. Fabián
Rodríguez*

CEO Bauss



Renata Arias

CCO WAS Co



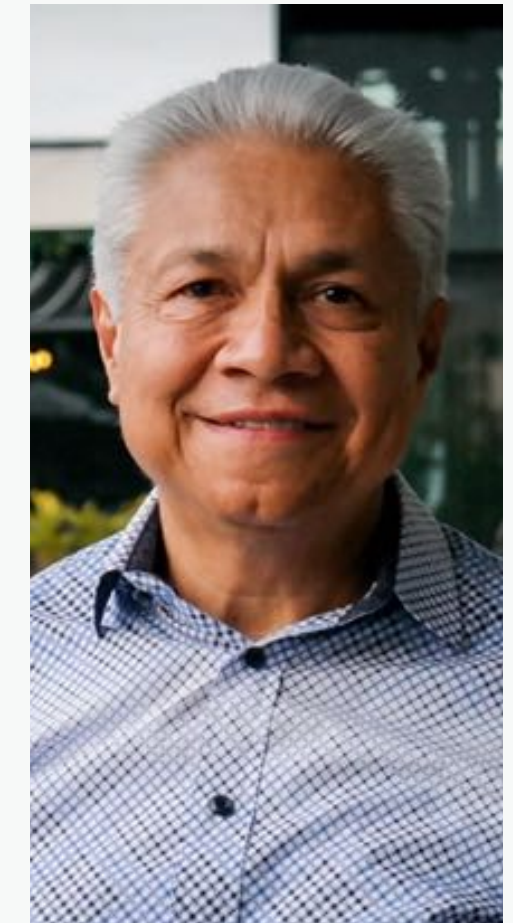
*Octavio
Villanueva*

CEO P.olin



*Mónica
Guerrero*

CEO MWorks



Pablo Castaño

Strategic Partner
and Investor



BUSINESS UNITS

BY WAS CO.

Worldwide Accountability Solutions is focused on the development of technology-based solutions with high social and environmental impact, focused in the construction industry.

www.wascompany.com



POLYCRETE

BY WAS CO.

We develop sustainable building materials based on recycled polymer composites: ceilings or false ceilings, interior and exterior dividing panels, among others. With better mechanical and chemical properties and at a competitive price.



WAS Co.

WORLDWIDE
ACCOUNTABILITY
SOLUTIONS



POLYCRETE

by **WAS Co.**



ECOLOGICAL CONCRETE

Ecological concrete mixes by including aggregates and substitute additives based on recycled polymers

Resistances from 90 kg / cm² to 250 kg / cm²



ECOLOGICAL BRICKS

Ecological bricks or blocks with thermal properties, lightweight and waterproof.

Measurements up to 40 cm x 20 cm x 20 cm

¿WHY YOU MUST CHOOSE OUR PRODUCTS?



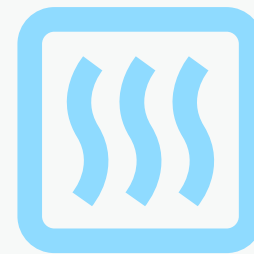
HIGH IMPACT: ON THE ENVIRONMENT AND ON YOUR POCKET



10% to 30%
lighter



Waterproof



Thermal



Sustainable trend



Certifications like
LEED

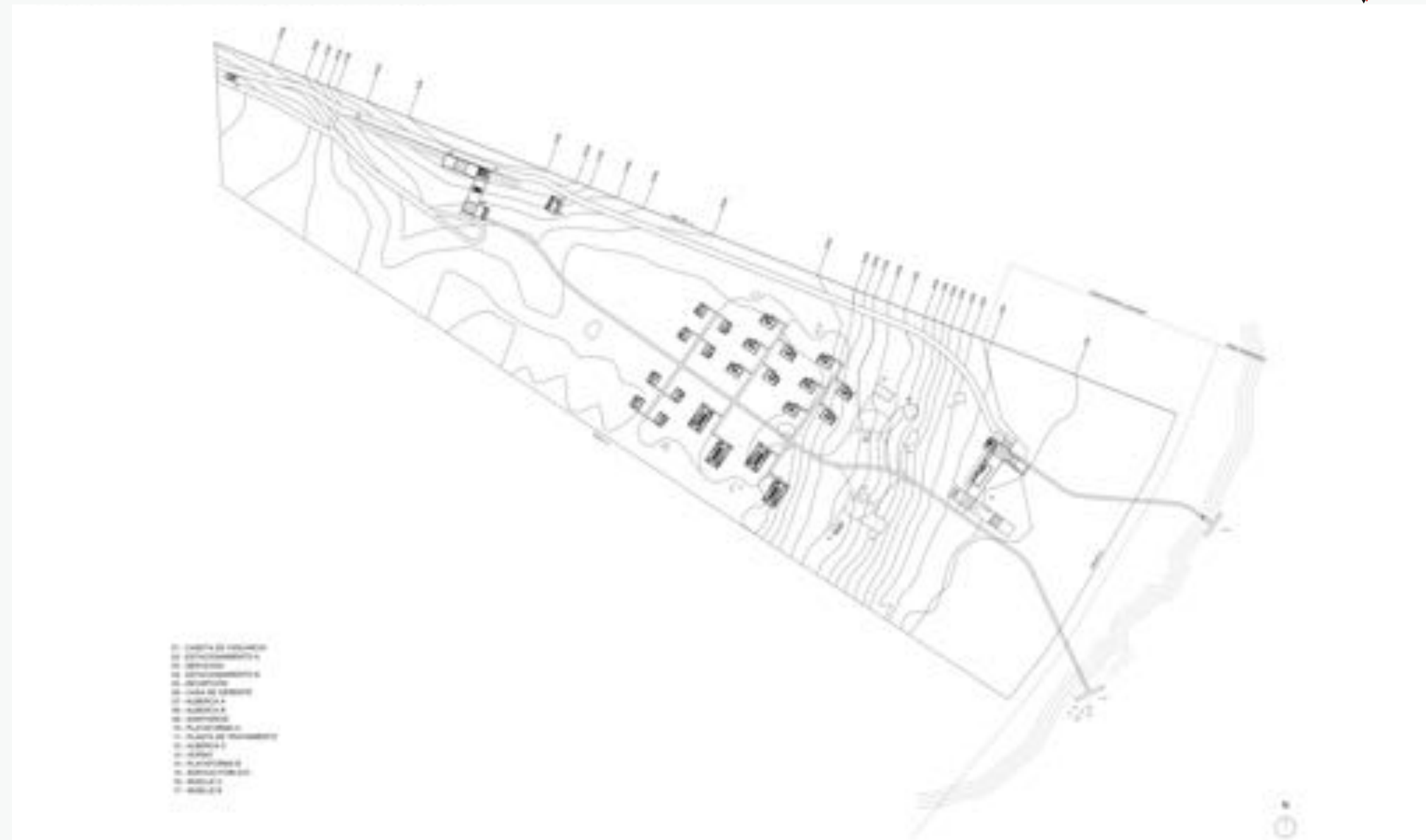
YUCATAN'S SUSTAINABLE STADIUM

POLYCRETE BY WAS CO



BOCA DE AGUA (HOTEL)

POLYCRETE BY WAS CO



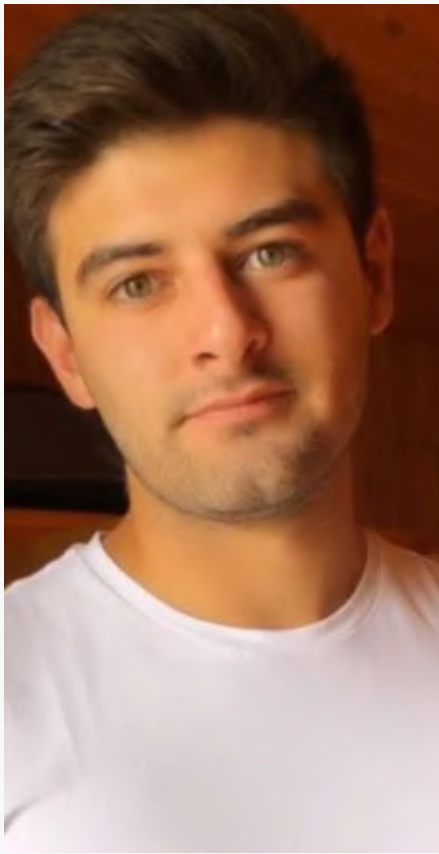
MEET THE TEAM

POLYCRETE BY WAS CO



Walter Mata

CEO
Strategic Planning
and Scaling



*Ing. Fabián
Rodríguez*

Civil engineer



*Arq. Diego
Torres*

Architect



*Dr. Edgar
Cabrera*

CTO
Polymer Expert



*German
Camacho*

Sales

MWORKS

BY WAS CO.

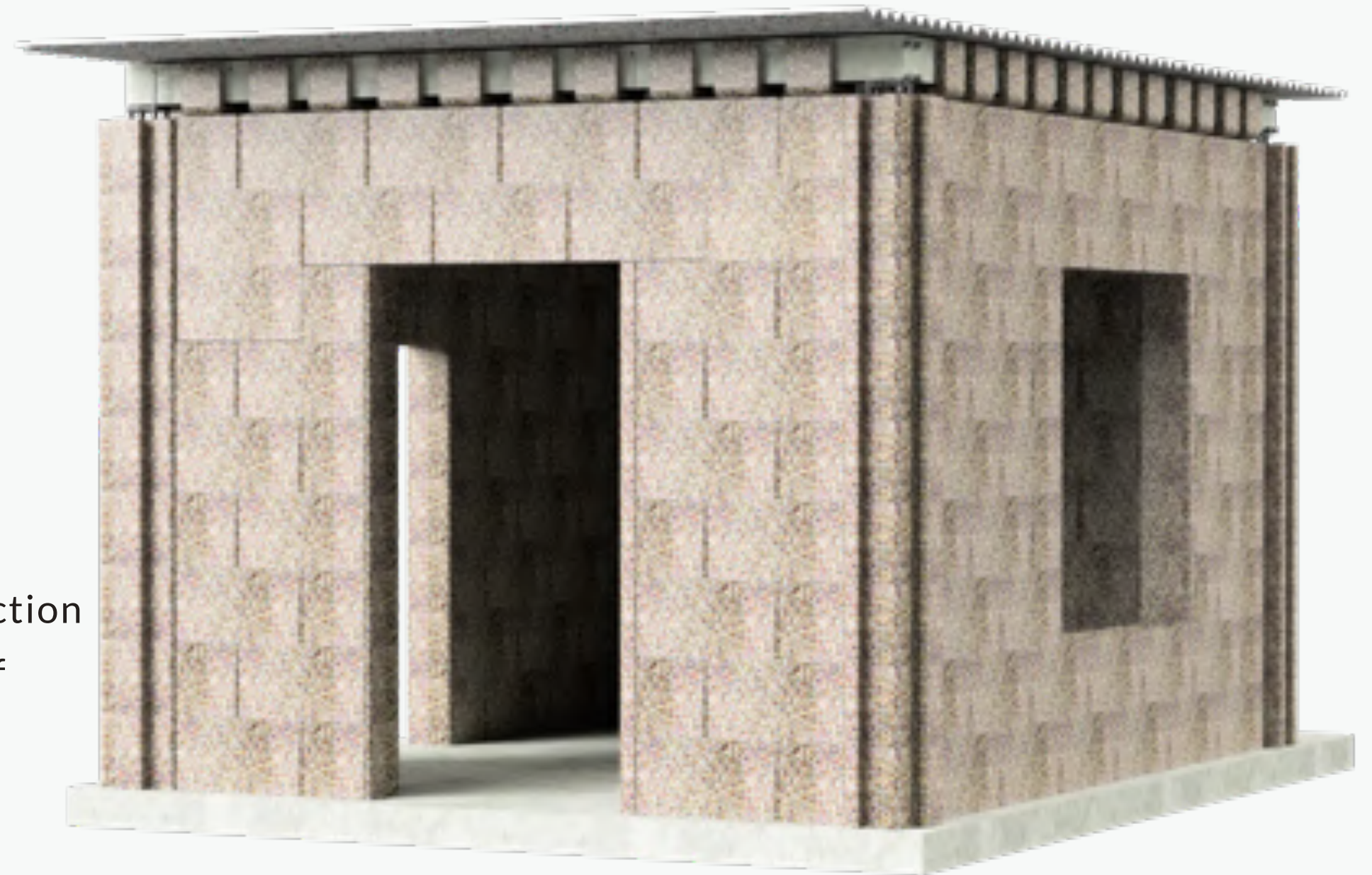
We build sustainable and affordable social buildings such as decent housing, schools, clinics, shelters, among others, with new sustainable construction materials and a new lego- type construction system that reduces costs up to 60%, and build the house in 2 to 3 days. The material insulates heat and cold, does not spread fire, and is highly resistant to earthquakes.



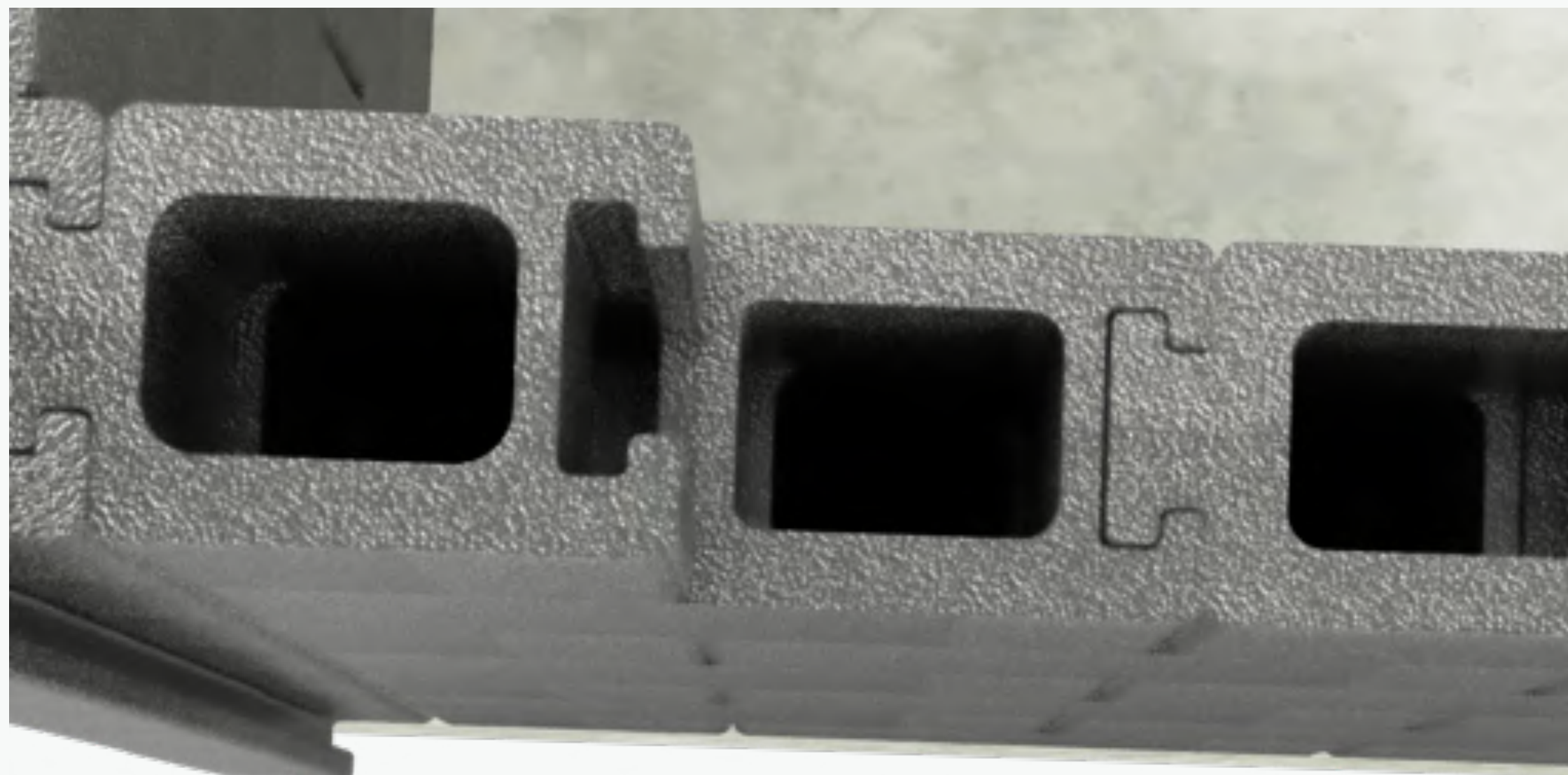
CONSTRUCTION SYSTEM

MÁS EFICIENTE

New constructive assembly system to accelerate construction time and reduce construction costs, eliminating the use of materials such as mortar, steel, among others.



Diseñado por: Lic. Daniela Fernández



Designed by: Lic. Daniela Fernández



HOW ARE WE SUSTAINABLE

HIGH ENVIRONMENTAL AND SOCIAL IMPACT



60% less:
\$5,500 USD

Construction Time
2 - 3 days



- Basic need
- Family welfare
- Health improvement
- Life expectancy

UN-Habitat definition
of decent housing



2.5 tons of plastic
125,000 bottles = **166 m3**



Reduction **21 tons of CO2**



Reduction **35 tons of water**

MEET THE TEAM

MWORKS BY WAS CO



*Mónica
Guerrero*

CEO
Strategist in
Impact,
Measurement and
Social
Empowerment.



Estefanía Flores

COO
Strategic and
Operational
Planning



*Daniela
Fernández*

CTO
Industrial designer



*Daniela
Charnichart*

CSO
Measurement of
Impact and
Sustainability

BAUSS

BY WAS CO.

Development and commercialization of materials for auxiliary or secondary use within the construction processes of projects and based on the properties and characteristics required in them.





CONTACT FORMWORK

Recycled material plywood applied for contact forms, more than 30 times of use than conventional ones, resistant to water, less adhesion of concrete, and can be recycled again.

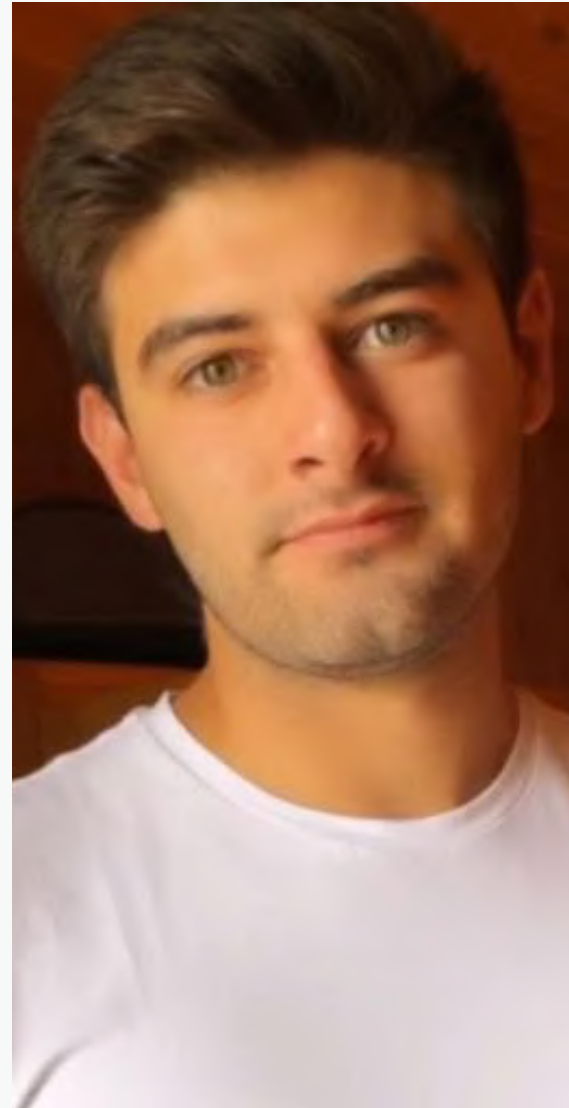


POLIN

Recycled material column from 2 "to 6" x 2 meters. More than 5 times of use than conventional ones, resistant to water, less adhesion of concrete, and can be recycled again.

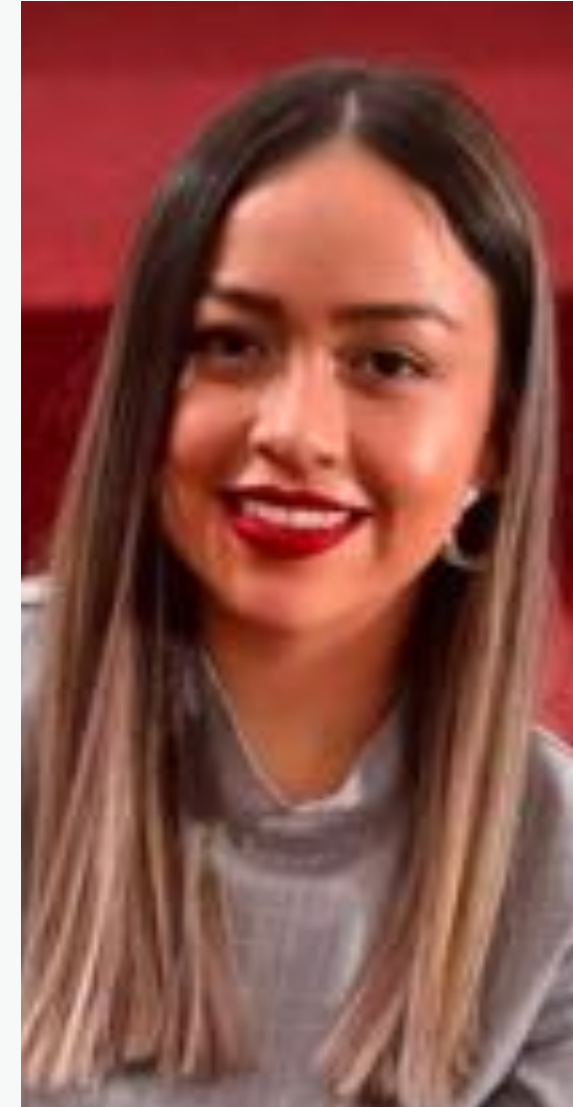
MEET THE TEAM

BAUSS BY WAS CO.



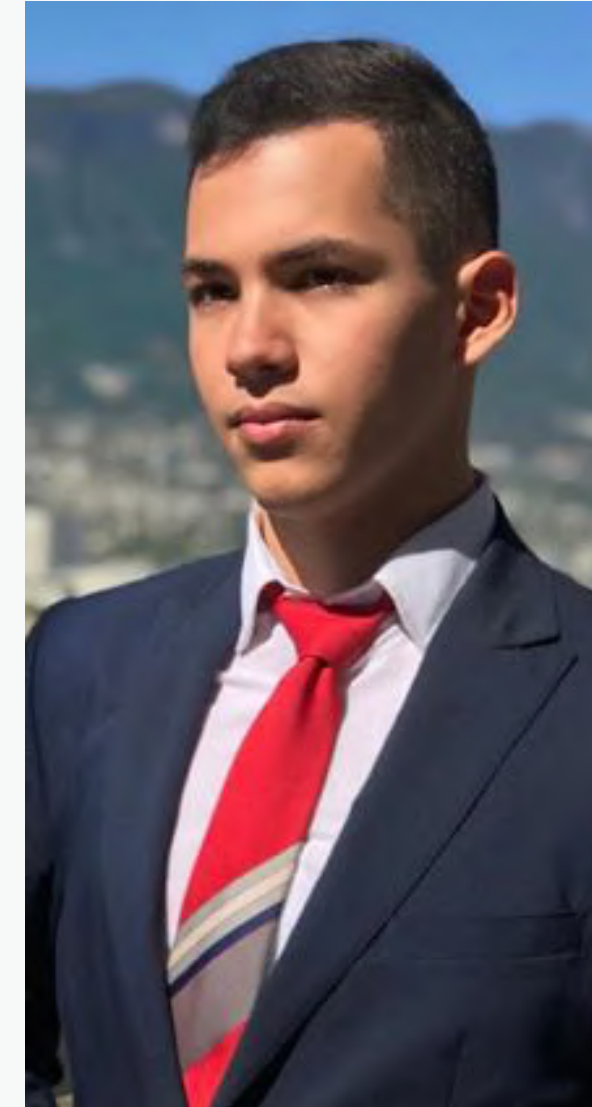
*Fabián
Rodríguez*

CEO
Civil engineer



*Gisselle
Mendoza*

Strategist and
Social
Empowerment



Jesús Zazueta

CTO
Materials

INTERNATIONAL

COLLABORATORS



Juego de Pelota
SUSTAINABLE STADIA DEVELOPMENT



QROMA
COLOR Y PROTECCIÓN



ECO
MAQUINAS
COLOMBIA



BERKSHIRE
GLOBAL ADVISORS



Yulia Fernández
Relationship and
Expansion in
Singapur.

CUSTOMERS AND PROCESS

WAS CO.



Collection and Plastic Supply :

- Landfills
- Donations
- Raw material suppliers
- Scavengers



Plastic Transformation:

- Extrusion Machinery
- Injection Machinery
- Thermocompression Machinery



- Architects
- Construction companies
- Firms Companies



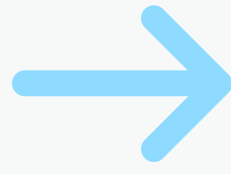
- Architects
- Construction companies
- Firms Companies
- Government
- Constructive NGOs



- Furniture Companies
- Architects
- Interior and exterior designers
- People who like sustainable products



- Furniture Companies
- Architects
- Interior and exterior designers
- People who like sustainable products



- Architects
- Construction companies
- Firms Companies

MAIN CUSTOMERS



GT+plastics



BOCA DE AGUA



AWARDS

WAS COMPANY



Nomination 2021



ADVISORS

WAS COMPANY



Gonzalo Mitre

Plastic Recycling
Expert



*Mariana
Santos*

CEO
Kalpa Ventures



Americo Ferrara

CEO
Life Is Too Short
Capital



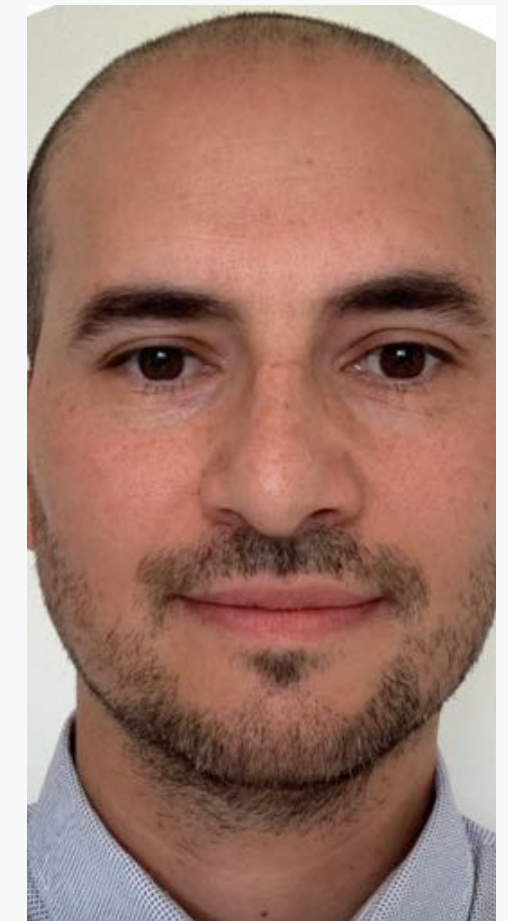
Pablo Castaño

CEO Altertax
Tax and Finance
Expert



Natalia Ruiz

Open Innovation
Hub Manager in
Repsol



Mario Sosa

Startups Lawyer /
business partner
in Astelarís

INVESTORS

WAS COMPANY



*Marianela Santos**



CEO
Kalpa Ventures

In process...



*Americo Ferrara**



CEO
Life Is Too Short Capital

In process...



Pablo Castaño



CEO Altertax
Tax and Finance
Expert



David Reyes



Investor and
Escalation
Strategist to USA

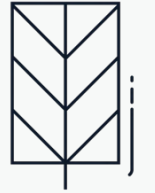
INVESTMENT

WAS Co México



WAS Co.

WORLDWIDE
ACCOUNTABILITY
SOLUTIONS



WAS Co.
WORLDWIDE
ACCOUNTABILITY
SOLUTIONS

Investment

\$10.5M

USD

NPV

\$40 M

USD

IRR

47%

ROI

273%

Stocks

15%

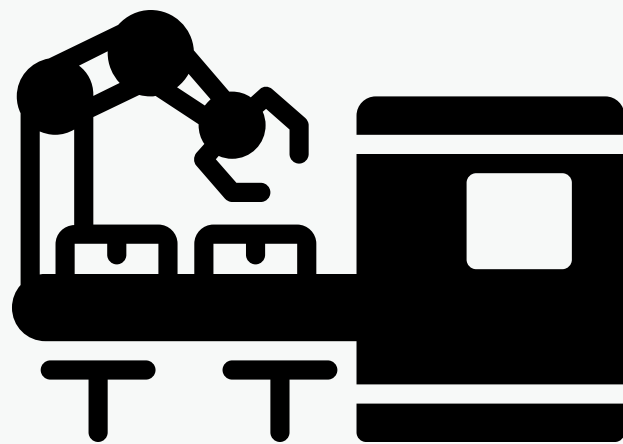
Return

4 years

INVESTMENT

WAS CO

\$8,766,301 USD



Machinery and equipment

- Recycling Machines
- Extrusion Machines
- Thermocompression Machines
- Transportation and Equipment

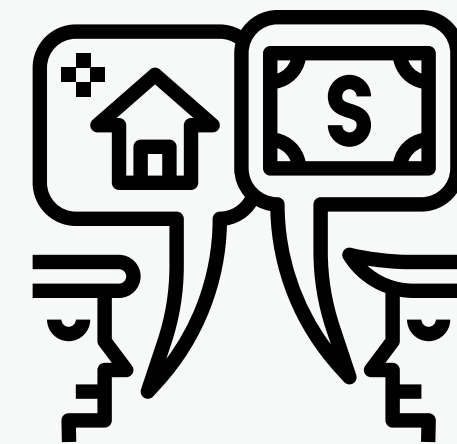
\$1,171,016 USD



Human Capital

- 12 months payroll

\$310,000 USD

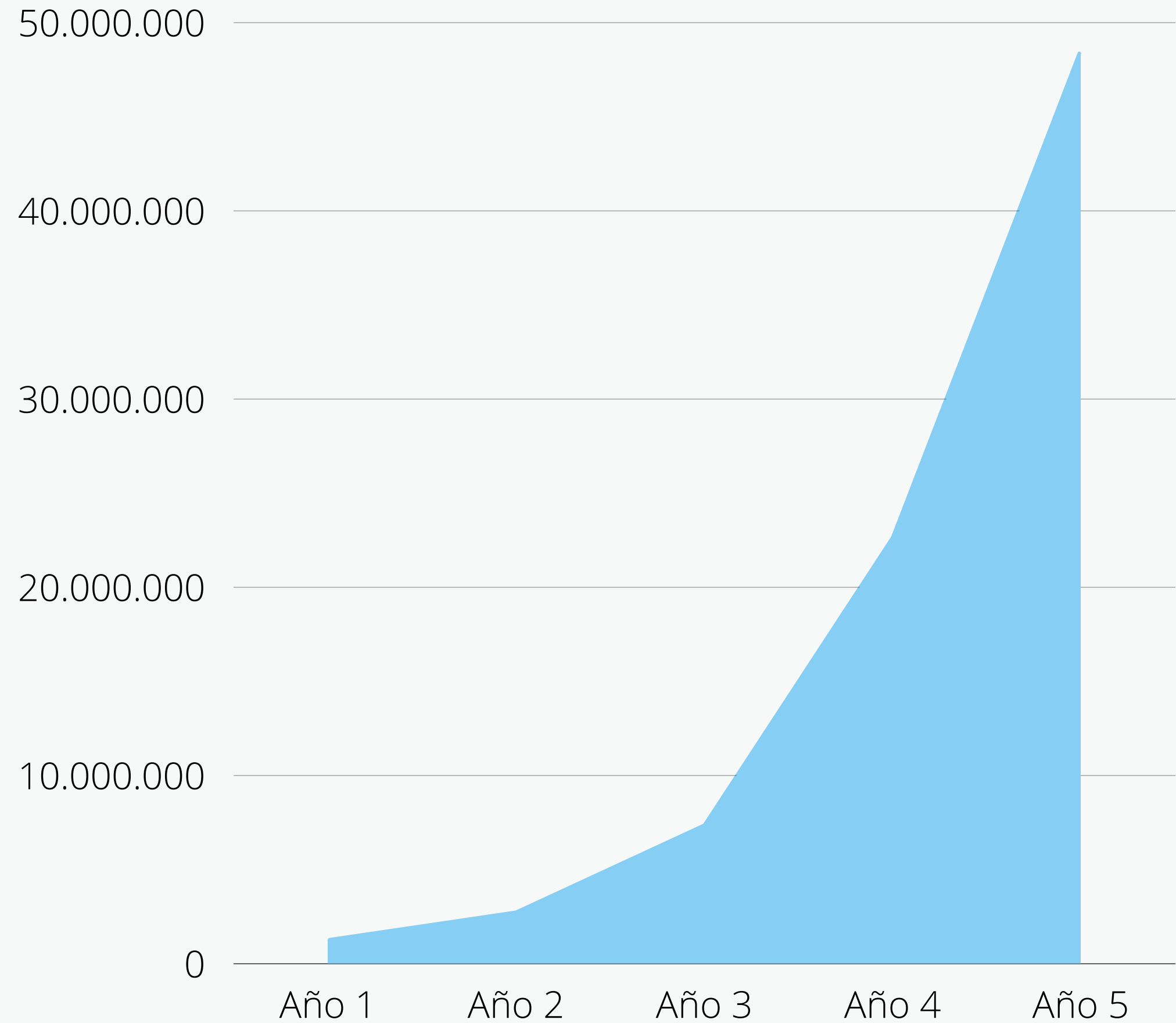


Working capital

- 12 months offices
- Industrial ship for 12 months

UTILITIES

POLYCRETE BY WAS CO



INCOME STATEMENTS 2022-2026

WAS CO



	AÑO 1	AÑO 2	AÑO 3	AÑO 4	AÑO 5
VENTAS	\$ 5,389,170.00	\$ 15,654,755.50	\$ 30,357,075.31	\$ 78,382,374.21	\$ 152,108,074.12
CDEV	\$ 2,848,985.06	\$ 8,335,282.21	\$ 15,849,601.44	\$ 41,242,379.44	\$ 80,179,281.91
UTILIDAD BRUTA	\$ 2,540,184.94	\$ 7,319,473.29	\$ 14,507,473.87	\$ 37,139,994.77	\$ 71,928,792.21
GASTOS DE VENTA Y OPERACIÓN					
Oficinas	\$ 120,000.00	\$ 252,000.00	\$ 529,200.00	\$ 1,111,320.00	\$ 2,333,772.00
Servicios básicos (luz, agua, gas)	\$ 120,000.00	\$ 126,000.00	\$ 132,300.00	\$ 138,915.00	\$ 145,860.75
Gasolina	\$ 12,000.00	\$ 12,600.00	\$ 13,230.00	\$ 13,891.50	\$ 14,586.08
Naves Industriales	\$ 180,000.00	\$ 378,000.00	\$ 793,800.00	\$ 1,666,980.00	\$ 3,500,658.00
Internet	\$ 3,000.00	\$ 3,150.00	\$ 3,307.50	\$ 3,472.88	\$ 3,646.52
Viajes (6 viajes al mes)	\$ -	\$ -	\$ -	\$ -	\$ -
Webs (Dominios, página web, correos)	\$ 1,000.00	\$ 12,600.00	\$ 13,230.00	\$ 13,891.50	\$ 14,586.08
NOMINA	\$ 585,507.66	\$ 3,225,509.88	\$ 4,469,568.60	\$ 8,332,180.20	\$ 11,243,485.80
AGUINALDO	\$ 97,584.61	\$ 268,792.49	\$ 372,464.05	\$ 694,348.35	\$ 936,957.15
SUBTOTAL	\$ 1,119,092.27	\$ 4,278,652.37	\$ 6,327,100.15	\$ 11,974,999.43	\$ 18,193,552.37
LIAI	\$ 1,421,092.67	\$ 3,040,820.92	\$ 8,180,373.72	\$ 25,164,995.34	\$ 53,735,239.85
IMP	\$ 142,109.27	\$ 304,082.09	\$ 818,037.37	\$ 2,516,499.53	\$ 5,373,523.98
UTILIDAD NETA	\$ 1,278,983.40	\$ 2,736,738.83	\$ 7,362,336.35	\$ 22,648,495.81	\$ 48,361,715.86

BE PART OF THE
SOLUTION
BE PART OF THE
CHANGE

WAS Company
www.wascompany.com



WAS Co.

WORLDWIDE
ACCOUNTABILITY
SOLUTIONS

Social Media

Página web: www.wascompany.com



[@wascomexico](https://twitter.com/wascomexico)



[@wascomexico](https://www.instagram.com/wascomexico)



[@wascomexico](https://www.facebook.com/wascomexico)



[@wascomexico](https://www.linkedin.com/company/wascomexico)

Phone: +52 8126047448

Mail: contacto@wascompany.com



Escanéame

Revolutionizing the construction industry with sustainable solutions, with greater economic benefits for customers.

The future of construction

Alternative and Substitution of Materials

We provide customers with new, more sustainable, efficient construction alternatives, and with better economic benefits in the short, medium and long term.

Savings in construction costs up to 40%

Our materials are easy to use, less waste, lighter, cheaper and with better mechanical and chemical properties.

Accelerating construction time to 30%

Our materials are very light and easy to use, helping our customers to speed up their time in construction.

Backed up by strategic partners **\$150k USD Seed Round**



Strong & Thecnical Team

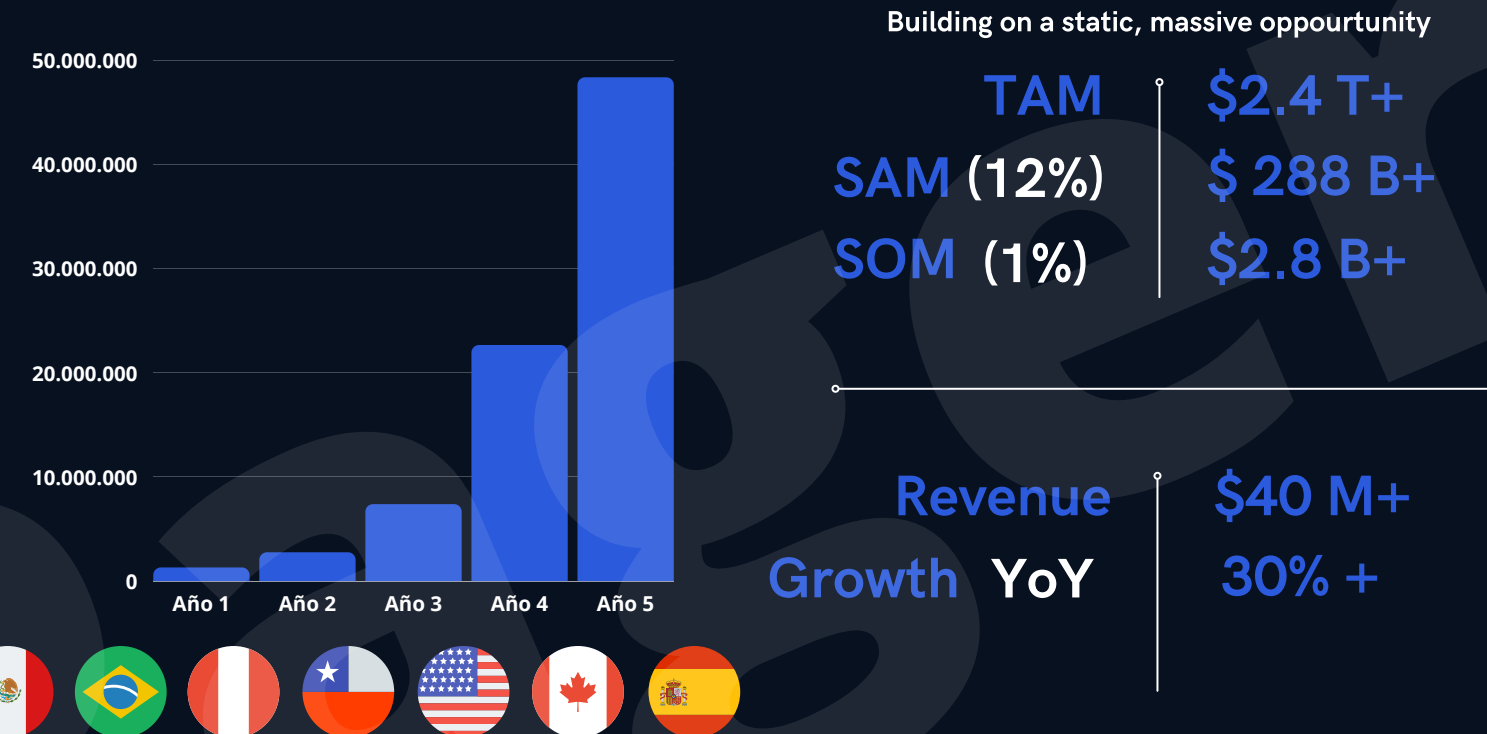
We design a multidisciplinary and equitable team with extraordinary people.

The company's founders and team range from students, architects, engineers, to scientists and researchers who are experts in polymers and cementitious materials, as well as experts in the recycling and construction industry with + 30 years of experience.



The fastest growing forwarder in the region

Opening production plants in Brazil, Peru and Chile in 2023 to cover 40% of the market opportunity in LATAM and then expand to USA, Canada and Europe in 2025.



Business Units



Customers

Serving and Contact with +100 of the most important companies in industries like plastic, recycling, construction, social organization, and others.

