

# Optimise the performance of your property portfolio

More sustainable and profitable assets with **PREDIBAT**, your decision support tool.



sitowie

# It is urgent to take action...

Looming climate risks, energy savings, carbon footprint reduction, new regulations, exponential increase in maintenance costs, resource scarcity, brown discounting.

... for more energy conservancy, resilience and sustainability.



## Our mission

The building sector has one of the largest environmental footprints in France.

In a context of climate emergency and economic tension, it is essential to take an interest in the building sector through a holistic approach, from design to rehabilitation.

The building stock is ageing, and maintenance remains a massive financial and environmental challenge. To avoid

a loss of value, obtain financing, limit the risks or find tenants, it is now urgent to take action.

Sitowie supports property owners and managers with its Predibat solution to make their assets more sustainable and profitable.

## Your needs

Have a **strategic overview** of your assets and their environmental performance

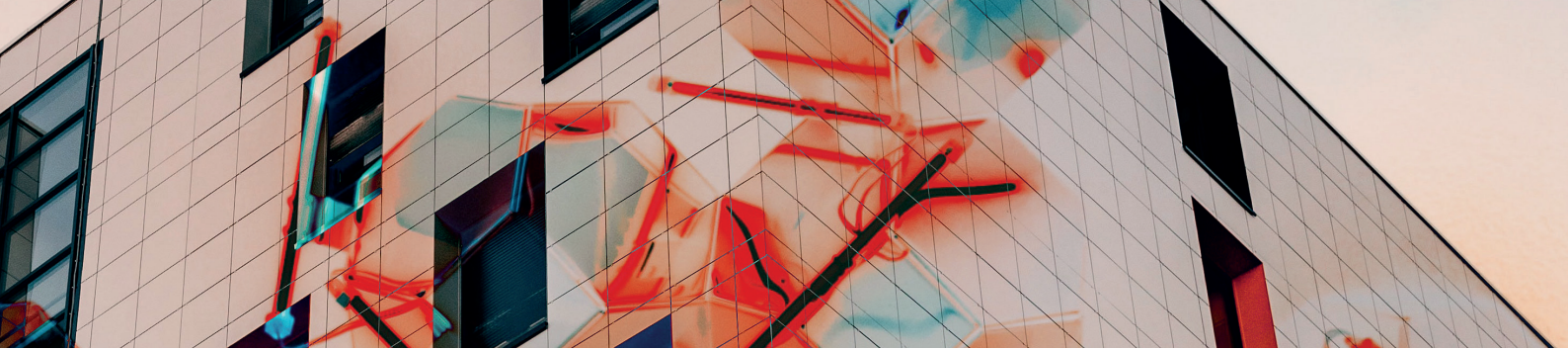
Access **essential** and reliable data on your buildings in a single tool to manage your maintenance programmes

Reduce the **technical obsolescence** of your assets and prevent a **loss of value**, optimising your investments

Calculate the **green capex** to reach your regulatory objectives, and maintain or even create value

Control your assets' resilience to climate risks

Ensure **compliance with new regulations** by reducing your assets' carbon footprint and energy consumption



# Predibat, a decision support platform

**Predibat is a user-friendly and effective tool that helps you maintain and renovate your real-estate assets, and supports you in achieving your ecological transition objectives and preserving the value of your assets.**

With Predibat SaaS, Sitowie provides a powerful solution for companies managing real-estate assets, regardless of their maturity in the use of data, to implement effective and meaningful maintenance programmes that can increase savings and improve sustainability.

Sitowie is committed to combining technology with the wide-ranging skills of its team to provide a complete range of services, including tools, support and transfer of knowledge to give more autonomy to our clients.



## Expected results

**15%**

Time saved for the teams when drafting the renovation plan

**Between 10% and 40%**

Potential savings on maintenance and investment budgets

**34%**

Potential reduction in the buildings' carbon footprint



- ✓ Structured information
- ✓ Improved knowledge of the building stock



- ✓ Automatic generation of BIM models with reliable metrics



- ✓ Better visibility on climate risks
- ✓ Delayed degradation
- ✓ Improved user comfort

Results observed on client cases

# A multidisciplinary team



Sitowie relies on a team of around 20 people with a wide range of skills: engineers, PhDs in civil/materials/thermal engineering, experts in artificial intelligence, developers, UX designers, architects, sales, marketing and communication specialists, etc.

Each of us contributes to finding solutions to fully support our clients.

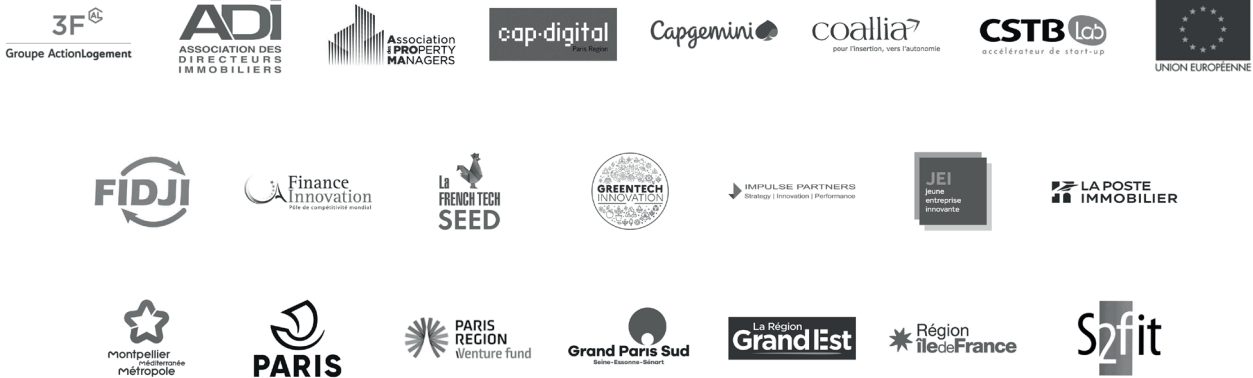


## A word from Pauline KOCH

Founder and CEO of Sitowie, Vice-President of ADI, member of the RBR-T group (which stands for Réflexion Bâtiments Responsables et Territoires - Reflection on Sustainable Buildings and Territories) of the Plan Bâtiment Durable (Sustainable Building Plan)

With my background as an architect, I noticed that there was little to no interest in the way buildings age, even though the sector has one of the highest environmental footprint. So I set up a research project at École des Ponts ParisTech. When I was awarded the Palladio scholarship, I realised there was a genuine need in the market and I decided to launch Sitowie. Today, real-estate decision-makers are not only faced with dual economic and environmental constraints, but they must also maintain their assets' value. Our goal is to support them to meet these growing challenges.

## Our clients and partners



Join our new think tank Club Sitowie, to find solutions for a sustainable real-estate future. We regularly bring together major players in CSR, innovation and the private and public real-estate sector to discuss the issues that are shaking up our industry. Contact us at [communication@sitowie.fr](mailto:communication@sitowie.fr) to be informed about upcoming events.

**sitowie**

[www.sitowie.fr](http://www.sitowie.fr)

WAI BNP PARIBAS : 19, boulevard Poissonnière - 75002 Paris  
RESIDENCE KEYS REIM : 24, rue des Capucines - 75002 Paris

## Your contacts



**Pauline KOCH**  
[pauline.koch@sitowie.fr](mailto:pauline.koch@sitowie.fr)



**Louis DAIGREMONT**  
Business Developer  
+33 (0)6.37.49.57.27  
[louis.daigremont@sitowie.fr](mailto:louis.daigremont@sitowie.fr)