



## Investing in quality data

Single source, validated data is key to delivering higher value, sustainable developments, fit-outs and refurbishments. Unlocking the potential of your data with the right tool will provide a transparent and comparable portfolio. Why not unlock the power of your data?



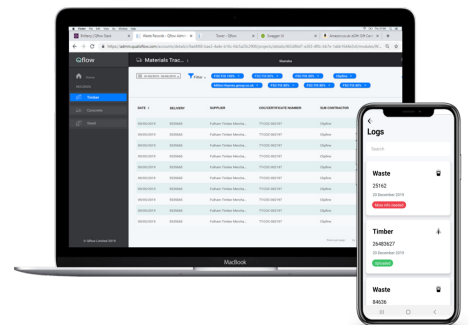
### Transparency in your supply chain

For property developers, there is a disconnect between design and as built data. Contractors wait weeks to collate and report on waste and material data. How much longer are you waiting for that data to hit your desk and how much trust do you have that it's accurate? Qflow accelerates, validates and structures data from your live construction sites allowing for accurate benchmarking across projects without the lag time.

Future proof your developments making them more **resilient** to remote working and access fully **transparent** supply chain data.

### What Qflow does for you

- Automated data capture at the **source**
- Assurance in the **quality** of your data
- Automated data **insights** analysis
- Transparency** of supply chain data to drive performance and **ROI**
- Asks questions of your data to drive key **strategic decisions**
- ESG** portfolio performance
- Investment grade** data for BREEAM, LEED, GRESB, and WELL reporting



### Trusted by:



# Closing the data loop

Qflow has helped a wide range of developments deliver higher value, more sustainable builds at lower cost while supporting the achievement of project certifications such as BREEAM, LEED, WELL, and GRESB.

## How?

- Reducing the risk of rework and delays through validated data
- Instant notifications of errors for immediate risk mitigation
- Evidential metrics providing full transparency across the supply chain
- Feed data into other systems to compare cost data and measure forecast accuracy

*On average Qflow has discovered that **37% of waste** removals and **15% of timber deliveries** are **non-compliant** – how could that impact your business?*

Qflow closes the loop between design and construction to enable more profitable and resilient developments.



/ Qflow

Since adopting Qflow, Landsec gained confidence in the data being reported from their development sites.

The increased accuracy provided by Qflow's system, gives them assurance on ESG metric reporting, and delivers invaluable data driven insights to inform their sustainability strategy.

What could Qflow do for you?

Since adopting Qflow

44T

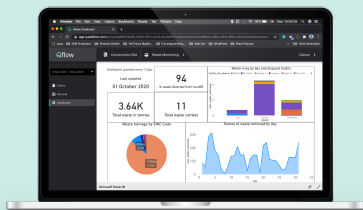
potential carbon savings

22T

potential waste reduction

40%

less time spent auditing



Key data insights for  
delivering more  
profitable developments

Connect with Qflow

