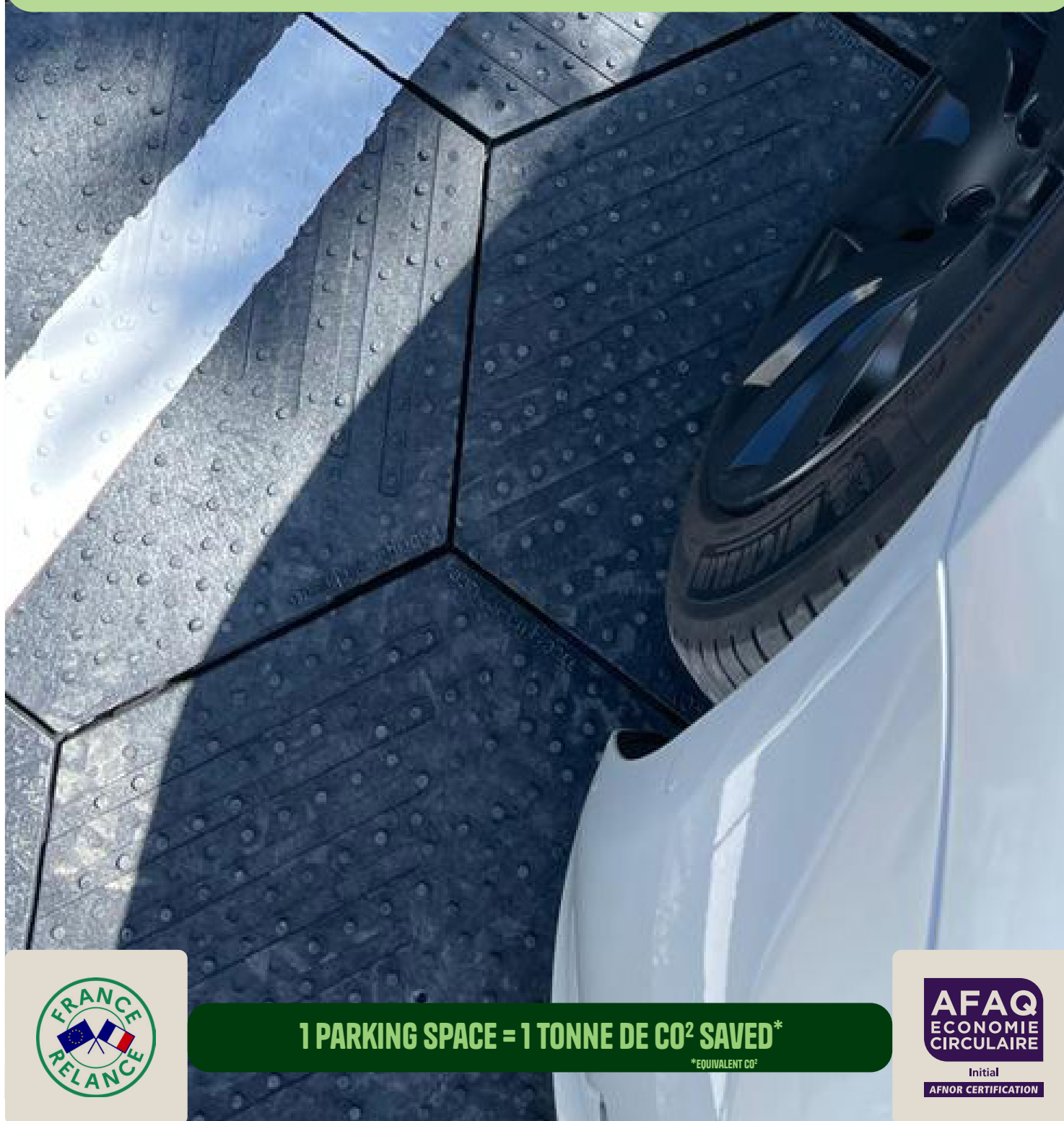


PURPLE SOLO®

**SAVE THE WATER
THINK SOLO**



**PERMEABLE SLABS MADE FROM
WASTE PLASTICS AND COMPOSITES TO PRESERVE SOIL.**



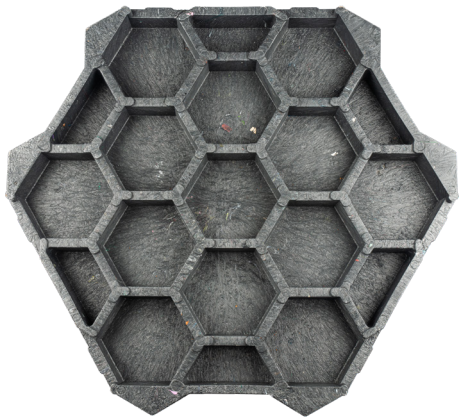
1 PARKING SPACE = 1 TONNE DE CO₂ SAVED*

*EQUIVALENT CO₂

AFAQ
ECONOMIE
CIRCULAIRE

Initial
AFNOR CERTIFICATION

AT PURPLE ALTERNATIVE SURFACE,
WE BELIEVE THAT THE CITY OF TOMORROW
WILL BE A CLEAN ENVIRONMENT
WHERE OUR CHILDREN CAN BLOSSOM
IN THE COMFORT OF
INTELLIGENT INFRASTRUCTURE.



Permeable
slab

Purple
Solo®



OUR PURPLE SOLO® SLABS

LEND THEMSELVES TO ALL YOUR PROJECTS



Forecourt and pedestrian
walkway



Events



Parking spaces



PMR access



Electric charging stations

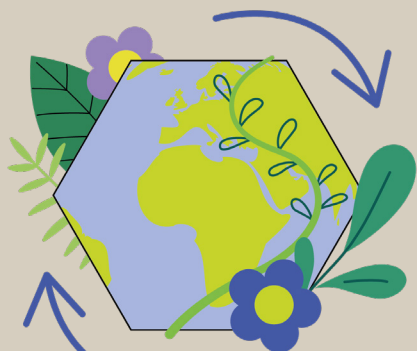


Worksite
hut

FEATURES OF THE

PURPLE SOLO® SLAB

01 OUR SLABS ARE ECO-RESPONSIBLE



01

— Rainwater infiltration directly where it falls

02

— Recyclable

03

— Eco-material and virtuous production

04

— Reducing the urban heat island effect

05

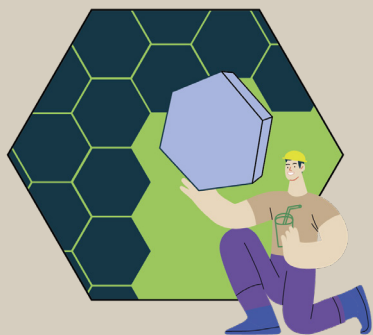
— Avoids pollution caused by water run-off

06

— Helping to decarbonise. Each parking space saves one tonne of CO².



02 OUR PERMEABLE SLABS ARE RELIABLE AND EASY TO USE :



01

— Easy to install with an interlocking system

02

— No need to use mechanical means

03

— High installation output (500 m²/day/shift)

04

— Robustness (7 cm thick)

OUR PRODUCTS

ARE CERTIFIED

Our products have been awarded the AFNOR AFAQ Circular Economy label (XP X30-901), recognising a circular economy project, as well as the Solar Impulse Foundation label, designed to highlight existing solutions that are both clean and cost-effective, while also having a positive impact on quality of life.



JOIN

THE MOVEMENT PURPLE!



It took two years of R&D to find solutions to the problems of plastic pollution and soil sealing, two major threats to water conservation.

The PURPLE PAV® slab is eco-designed and permeable. Made from plastic waste that has been diverted from landfill or incineration, it allows rainwater to infiltrate directly where it falls.

This product therefore meets the new regulatory requirements on soil artificialisation. It also enables rainwater to be managed virtuously, while avoiding the release of one tonne of CO2 emissions per parking space installed.



We will take the time to listen to your project and then carry out a detailed audit. Purple Alternative Surface has its own design office to provide you with its expertise and technical skills for your layout projects.

Contact us directly :

[purplealternativesurface.com](https://www.purplealternativesurface.com)
(0) +33 3 84 22 32 26



**Scan
for more details**



Purple Alternative Surface
3 rue Marcel Pignon
90300 Cravanche - France

www.purplealternativesurface.com
(0) +33 3 84 22 32 26
contact@purplealternativesurface.com