

GREENHOUSE WITH RADIANT FLOOR

NUNA®

CAFÉ & ESPÍRITU



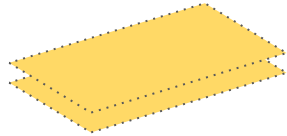
GREENHOUSE WITH RADIANT FLOOR

NUNA[®]
CAFÉ & ESPÍRITU

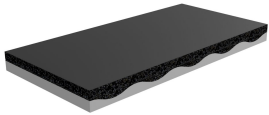


GREENHOUSE NUNA

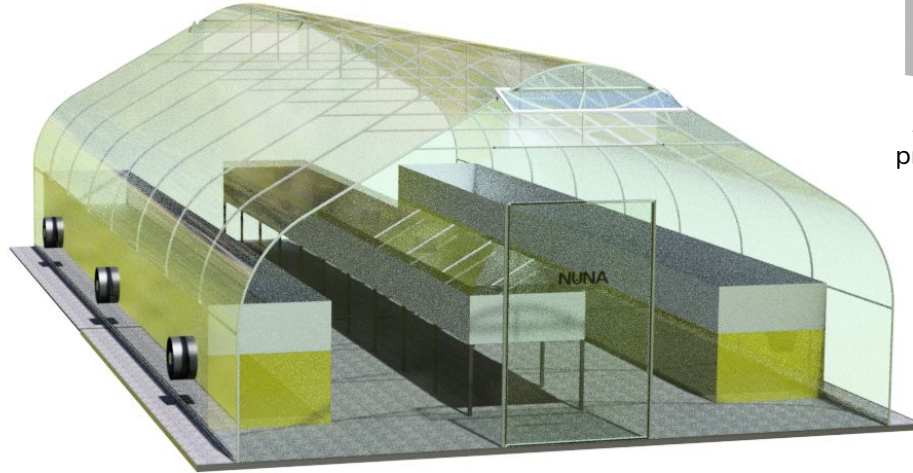
NUNA[®]
CAFÉ & ESPÍRITU



Double wall



Thermal isolation floor



Air cycles
programmer



Infrared waves
for coffee



Increases temperature by 30%



Decreases relative humidity

Allow to standardize process

=

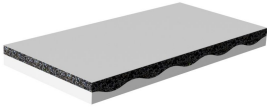
CONSISTENCY

COFFEE CELLAR

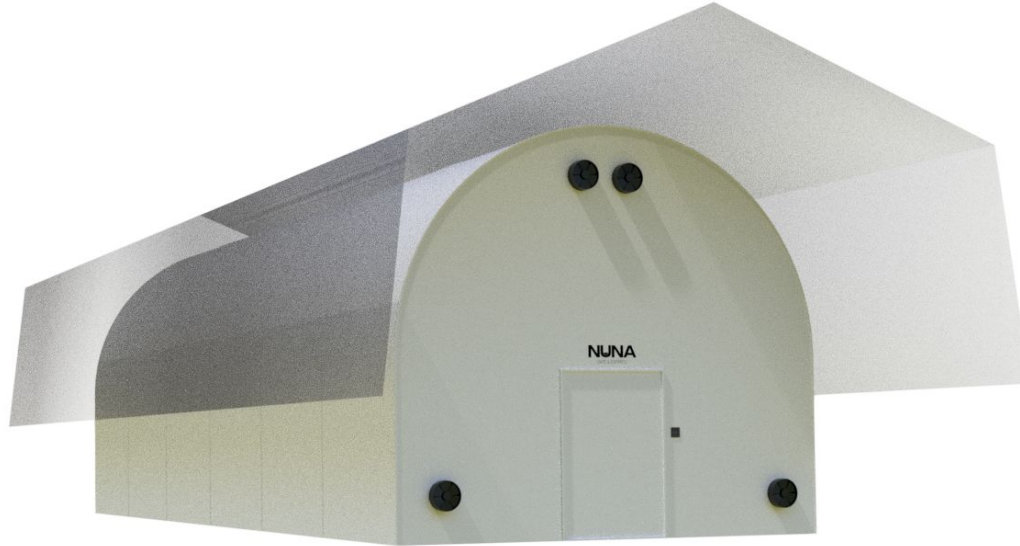
NUNA[®]
CAFÉ & ESPÍRITU



Thermal isolation wall



Thermal isolation floor



Air dumper



Air flow programming



Natural Night Cooling

Does not consume electricity

57°F to 64°F 14°C to 18°C

=

CONSISTENCY

INNOVATIONS

NUNA[®]
CAFÉ & ESPÍRITU



Transportation and
fermentation bag



Floating and sorting



Cherry sorting
ergonomic table



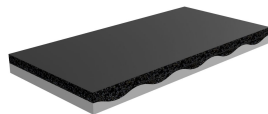
Selective fermentation
tank



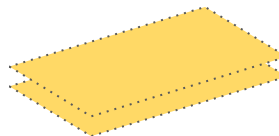
Air cycles
programmer



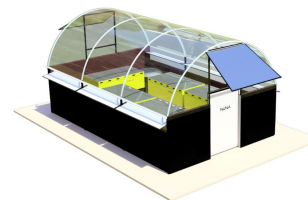
Thermal solar collector
AIR DRYER / OREADOR



Thermal floor



Thermal screen



Greenhouse with radiant
floor



Infrared waves
for coffee