

Shower Hose 2.0

CHROMALUX[®] Zero

NEOPERL[®]

flow, stop and go[®]

Bye-bye PVC, welcome PE (from March 2021)

**The future is drinkable.
And stylish.**



The next step forward

**The technical solution
has to work.**

The Neoperl Solution

Outside STYLISH – inside PERFECT.

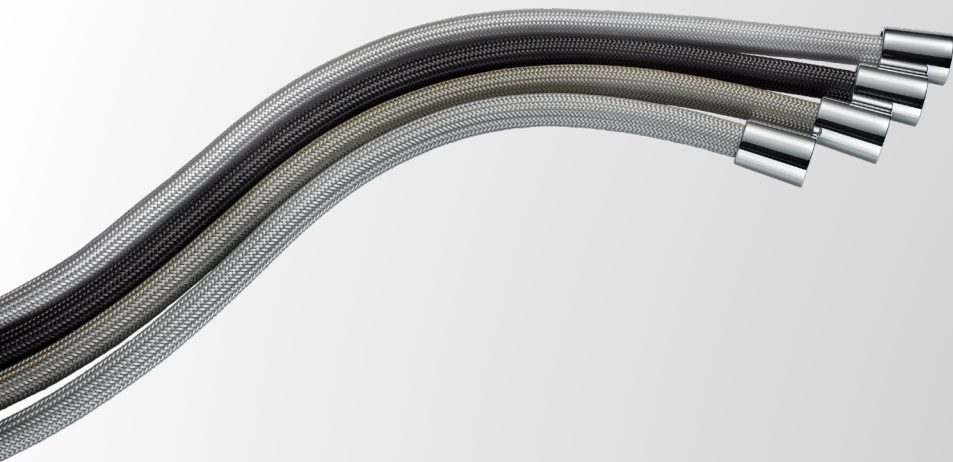
Special, patent pending, braiding: PET
Polyethylenterephthalat

Inliner: PE-ULD
Polyethylen Ultra Low Density



A bunch of features

CHROMALUX® Zero



- approved for potable water
- water-repellent and anti-mold
- resistance to chlorine
- sustainable and recyclable

A bunch of features

CHROMALUX® Zero

Approvals

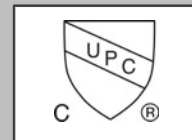
Product Standards:

DIN 1113; ggf. ASME

Attainable Approvals and Certificates:

Hygienic: KTW, W270, ACS

Mechanical: NF, cUPC



Even machine-washable!

CHROMALUX® Zero



Respect the environment



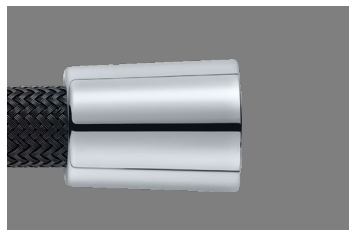
Cold wash sufficient



Max. 60°

Well connected

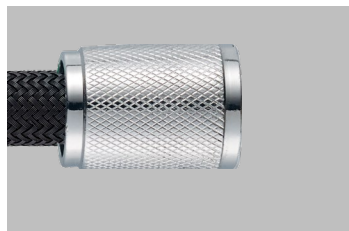
CHROMALUX® Zero



G 1/2"
50.8020.D0053



optionally with **key flats**



optionally with
knurled cone



optionally with **knurled nut**

Note: Other fittings and connections available upon request.
All shower hoses are supplied with plastic caps to protect the cones.

Optional: Revolving connections eliminate the problem of the hose becoming twisted in the shower area.

Fitting Material: CW617N

More than functions.

CHROMALUX® Zero

Emotions!

Exceptional, textile feel



Stylish basic colors

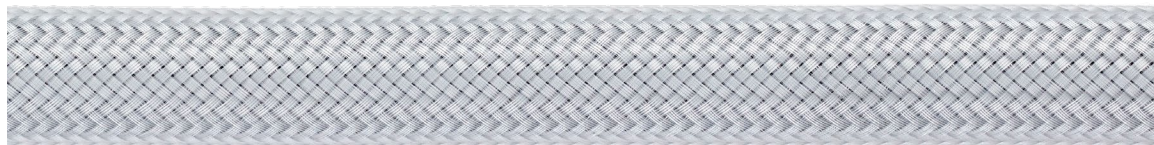


Stylish basic colors

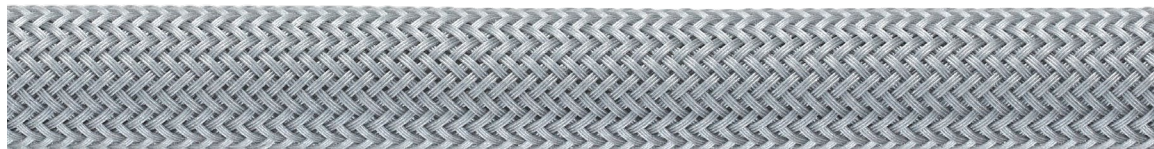
CHROMALUX® Zero



black



silver 1*



silver 2*



silver 3*

*Colorname to be determined

My shower hose, my color.







