



Overhead line monitoring technology combining non-contact LiDAR sensors and advanced analytics to improve the capacity, resilience and safety of the grid

FEATURES AND CAPABILITIES:

- Maximize monitoring of overhead lines by visualizing up to six phases of power with the use of one non-contact LiDAR sensor
- Secure cloud-based data-portal to view information, configure alerts, and download historical data
- Seamless EMS integration via the secure LineVision datafeed
- Complete turnkey solution, including installation technical direction, warranty, communications and data delivery
- Non-contact LiDAR monitoring system eliminates the need for outages, crews, or bucket truck / hot-stick equipment

LINEVISION SYSTEMS INCLUDE:

- Optical LiDAR sensor for conductor position and motion measurement
- Full hardware warranty and software license
- Installation technical direction & calibration
- Data connectivity via secure web interface and/or encrypted datafeed

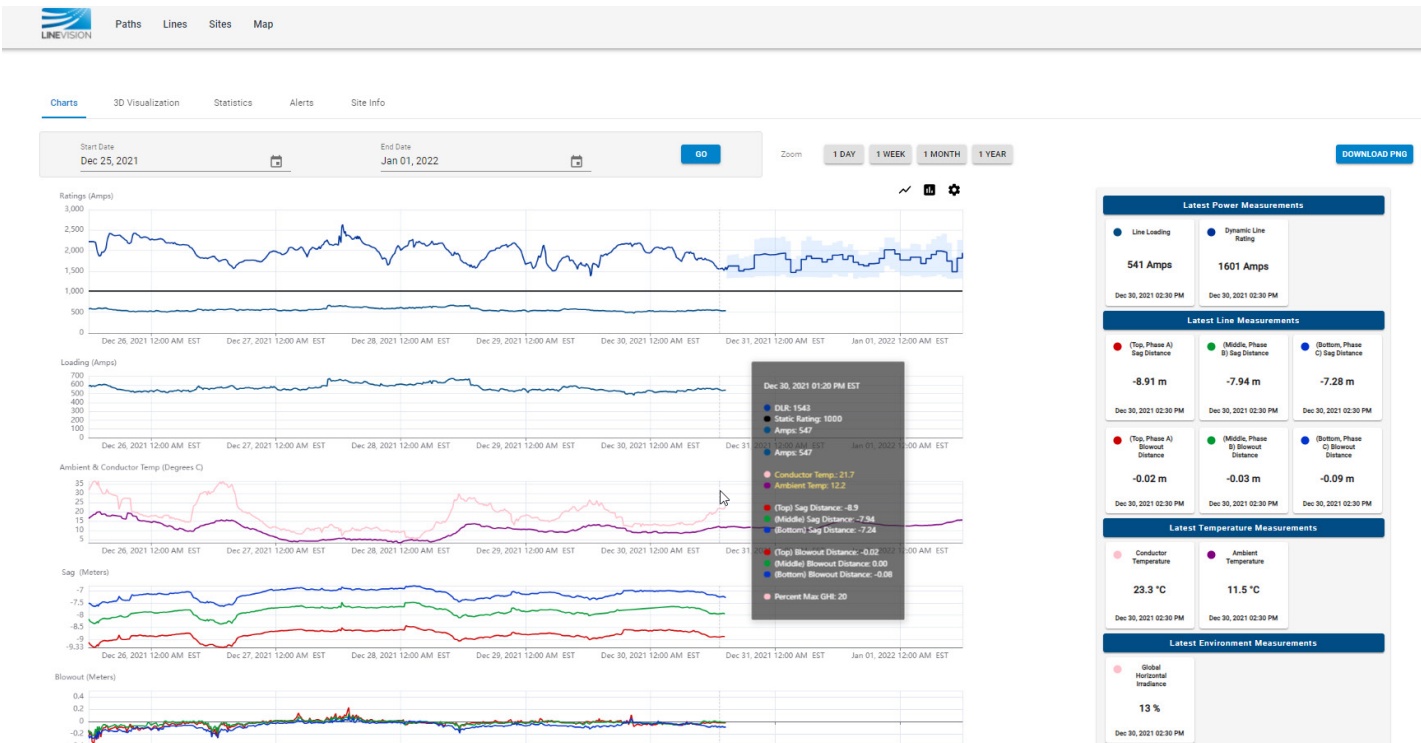
Transmission line owners and operators face the challenges of integrating renewables, implementing asset health monitoring, and ensuring grid reliability with aging infrastructure and increasing energy demands.

With one common hardware platform, LineVision provides multiple software modules including LineAware[®], the LineRate[®] Suite, and LineHealth[®] to increase the capacity, resilience, and safety of transmission lines.

Combining patented non-contact LiDAR sensors and advanced analytics, a single system continuously monitors up to six conductors, without the need for disruptive line outages or costly specialized installation equipment.



LINEVISION DATA PORTAL



LINEVISION MODULES

LineAware	LineRate Suite	LineHealth
SITUATIONAL AWARENESS	DYNAMIC LINE RATINGS	ASSET HEALTH MONITORING
<p>Continuous monitoring to ensure lines are within safe operating limits and deliver real-time alerts when anomalous events pose a risk to system reliability or public safety</p> <ul style="list-style-type: none"> Conductor sag, all phases Conductor Blowout, all phases Ambient weather conditions Icing risk and detection alerts 	<p>Reliably and safely increase the capacity on transmission lines by up to 40% with real-time and forecasted dynamic line ratings</p> <ul style="list-style-type: none"> Forecasted and real-time dynamic line ratings Customizable reporting intervals Customizable short term and long term emergency ratings 	<p>Improve asset management and grid reliability with a non-invasive tool designed to evaluate conductor health and prioritize maintenance or upgrades of critical assets</p> <ul style="list-style-type: none"> Thermal aging analysis from high temperature exposure Remaining tensile strength Projected conductor end of life Initial vs actual sag assessment Extreme weather event analysis Recommended revised safe operating limits
	AMBIENT ADJUSTED RATINGS +	
	<p>Non-contact sensors installed at critical locations utilize ambient temperature measurements to increase grid capacity and resilience</p> <ul style="list-style-type: none"> Hourly updated forecasted and real-time ambient adjusted ratings Rating is verified by a field sensor to ensure accuracy and system reliability 	

Request a custom consultation today

INFO@LINEVISIONINC.COM