

marasup⁴⁰
CRVI-3

ferroDECONT

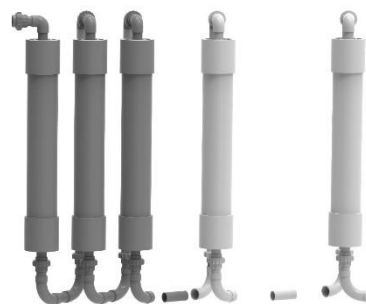
In the past safety measures for handling toxic metal compounds in waste effluents was not always given, thus leading to environmental problems we face today e.g. at abandoned sites. Meanwhile one of these substances, hexavalent chromium Cr(VI), is due to its potential toxicity and mobility strictly regulated by law.

When facing waste water problems industrial manufacturers require a cost-effective solution to treat their effluents. Industry and process water containing heavy metals can be purified via the ferrodcont®-process principle and returned to the sewage line. The method does not increase salination of the treated water with suitable pH values. Compact sludge formation and potential recovery of recyclable materials reduce sludge disposal costs.

The ferroDECONT mobile water treatment system marasup⁴⁰ CRVI-3 is designed to reduce hexavalent chromate to the harmless trivalent state. For optimal adjustment the modules are expandable depending on the chromate concentration.

The marasup⁴⁰ CRVI-3 system is a fully mobile and automated fluidized bed system in two containers.

Remote access and monitoring facilitate service and help saving costs.



Expandable reaction modules



marasup⁴⁰-unit for groundwater treatment with upstream feed tank



ferroDECONT
JUST PUMPING IRON

ENVIRONMENTALLY VALUABLE

Simple and low-cost production of the applied iron granules contributes to saving economical and ecological resources. No use of further chemicals in normal operating mode is necessary.

LOW SALINITY

No increase of salinity during treatment favors water reuse and circulation or direct discharge after particle separation.

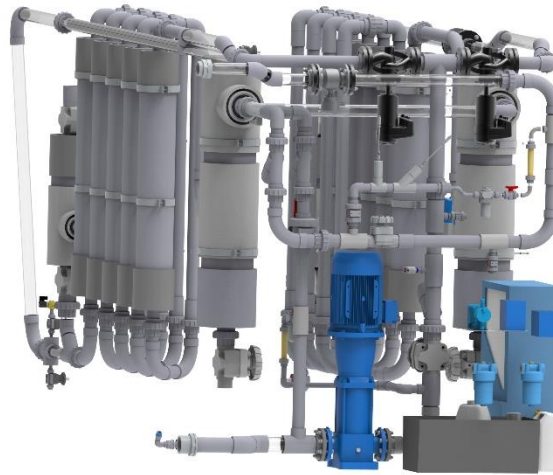
CUSTOM SOLUTIONS

The mara product line can be provided as mobile standalone turnkey solution or integrated into existing cleaning systems. ferroDECONT is specialized in designing and building tailor-made solutions which can be supplied on skids or built into 20 and 40 foot containers.

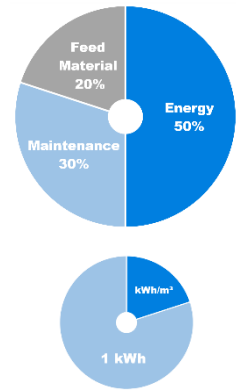
The whole system is fully scalable and therefore easy customizable.

CONTACT

If you would like to receive further information on any of our products or services, then please feel free to contact us via email: office@ferrodecont.at or visit our website: www.ferrodecont.at



Cleaning modules installed in isolated 20 foot high cube containers.



Container Details

Type	Container 20' / 20' HC, isolated
Length x Width x Height	6.1 x 2.4 x 2.6 m / 2.9 m
Shipping Weight	4,700 kg / 7,000 kg

System

Pump & Treat	Fluidized bed
Max Pressure	10 bar (145 psi)
Max Capacity	40 m ³ /h
Max Reduction Rate Cr-VI	1 mg/l continuous
Water Temp Range	0 - +50 °C (+32 - +122 °F)
Service	400 VAC, 3 phase, 50 Hz, 40 FLA
Remote access	Standard
Operator Work Station	15" touch screen

Analysis / Sensors

Cr(VI)	UV-VIS (DPC)
Water Parameters	eC, Eh, pH, O ₂ , T, turb.
System Parameters	pressure, flow-rate

Our pioneering work is facilitated by an in-house laboratory and technical center and allows our customers to benefit from continuous development.



AVAILABLE SERVICES

- Consulting
- Lab Tests
- Piloting
- Installation and Setup
- Applications Support
- Technical Support
- Monitoring Systems
- Commissioning
- Maintenance
- Warranty


ferroDECONT
JUST PUMPING IRON

Center for Applied Technology
Peter-Tunner-Straße 19
A-8700 Leoben
Austria