

ECORK

PROJECTED CORK



LETTER OF COLORS



Ecork

Projected Natural Cork



Ecork projected natural cork, is a 100% ecological product that offers protection to different surfaces of all types of attacks. This material can be projected onto an infinity of surfaces such as: exposed concrete, ceramics, aluminum, glass, fibers, asphalt sheets, steel, fiber cement, polycarbonate, plaster, plasterboard, agglomerated materials, wood, pvc and enameled surfaces, among others.

The projected cork can also be used as an insulation using it as an intermediate material between two other building materials.

With the application of projected cork, definitive solutions can be obtained to solve any problem related to: dampness, waterproofing, acoustic insulation, slippery surfaces, fireproofing, and encapsulation of asbestos or bacterial infestation.

In addition to all its technical qualities, it is an aesthetic material useful to decorating or embellishing any of the before mentioned surfaces.

Also, on top the projected cork any decorative paint for interiors or exteriors use can be applied.



Ecological



Breathable



Waterproofing



Stable



Adherent



Continuous



Low thermal conductivity



Elastic



Fireproof



Antioxidant



Antibacterial



Anti saltpeter



Anti putrefaction



Acoustic insulation



Thermal insulated



Durable and resistant



Anti dampness



Decorative



Sealant



Asbestos encapsulation



CK - 01



CK - 02



CK - 03



CK - 04



CK - 05



CK - 06



CK - 07



CK - 08



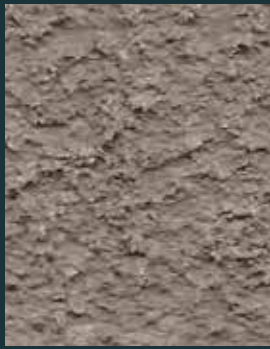
CK - 09



CK - 10



CK - 11



CK - 12



CK - 13



CK - 14



CK - 15



CK - 16



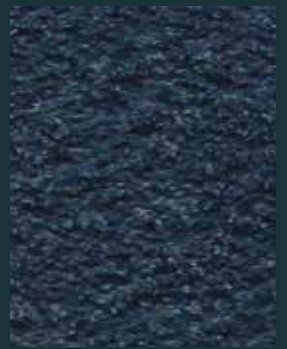
CK - 17



CK - 18



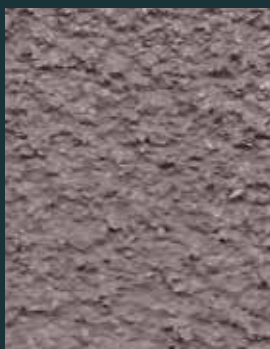
CK - 19



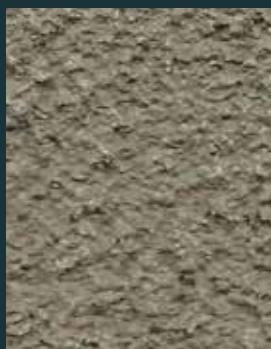
CK - 20



CK - 21



CK - 22



CK - 23



CK - 24



CK - 25



Ecork BeNeLux.

Admin. Office :
Lieveberm 3
B 8340 Damme Moerkerke
Belgium Europe

Wim Corty - Ceo Owner
+32 471 73 27 34
wim.corty@ecork.be

Registered Office:
Lieven Bauwensstraat 20
B 8200 Sint Andries Brugge
Belgium Europe

info@ecork.be
www.ecork.be