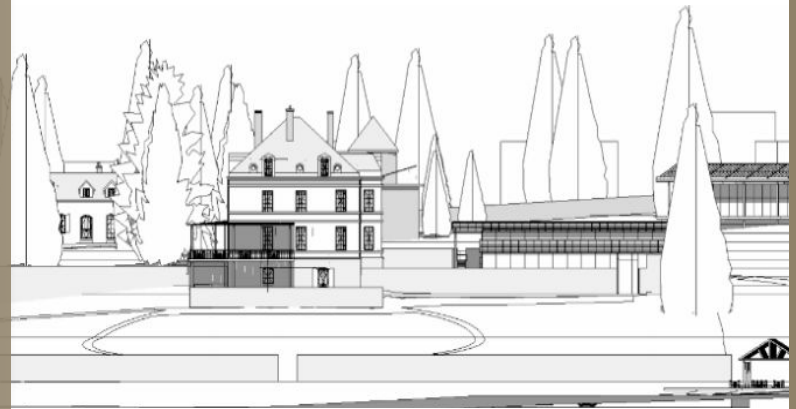




CHÂTEAU DU
NOUVEAU MONDE

wisdom **begins** in wonder



01

Our project

A nature-place to live today the world of tomorrow

02

Our team

Us, the builders, the entrepreneurs, the inspirers

03

The place

The castle of Montalan, 1h15 south from Paris, at the gates of Burgundy

04

Steps

Our proof of concept: La Lanterne du Nouveau Monde

05

Perspectives

A project in tune with the times

06

Join us !

Become founder, associate, partner... why?

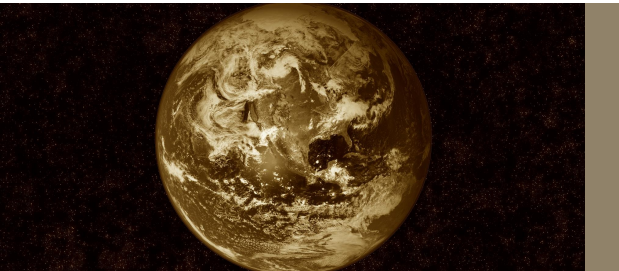


Our project

01



The **origin** of the project



Humanity faces its greatest **challenges**

Environmental crisis, artificial intelligence, cloning, extinction of species, transformation of work, massive human migrations...



Our “bubbles” make us forget our **capacities** to face those challenges

Filter bubbles, social boundaries, cultural barriers, comfort bubbles, technical silos, ignorance bubbles, routine commuting ...



Nonetheless **solutions** for a new world are emerging everywhere

Old forgotten solutions, advanced technologies, reinvented natural solutions, human and social solutions ...

Our **solution**

An experiential Nature-Place of 20 hectares to live
today the world of tomorrow

The **Château du
Nouveau Monde**



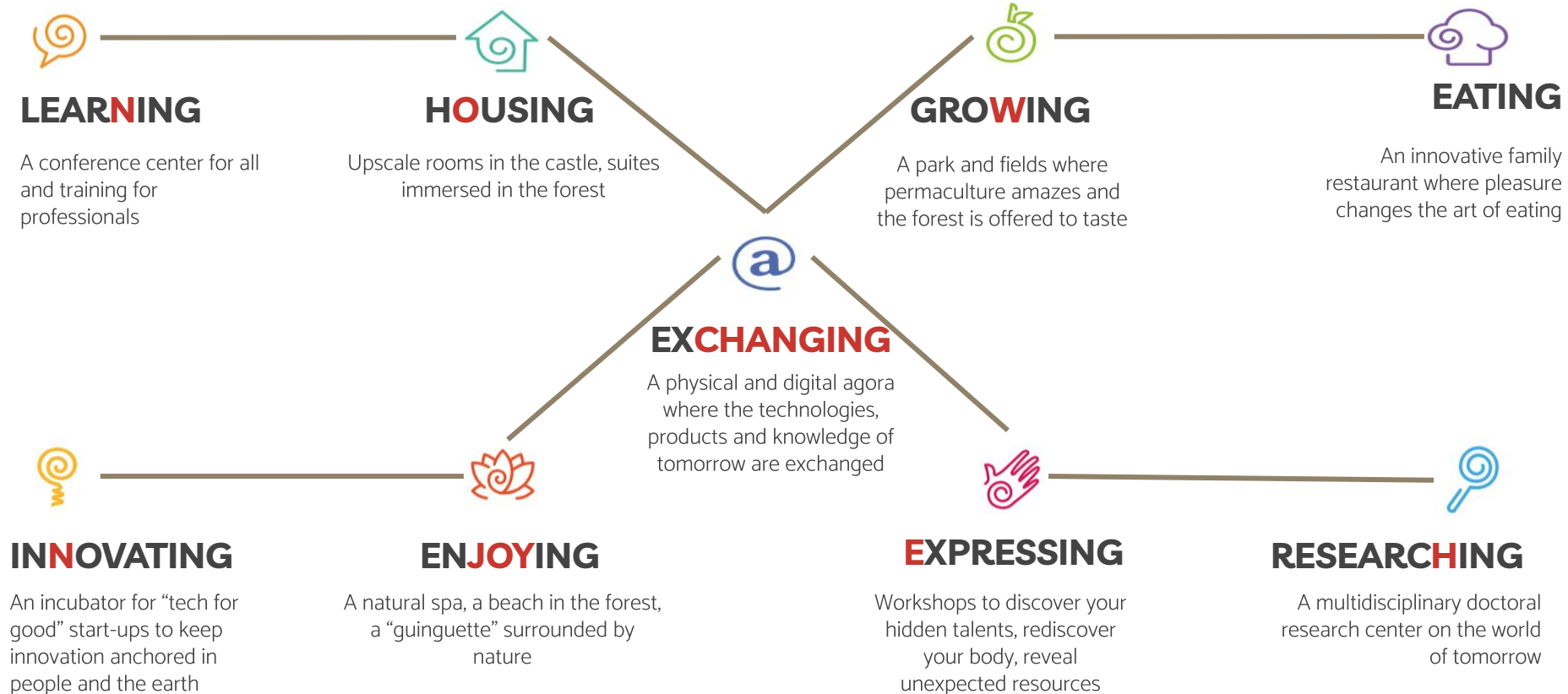


(1) BY **INTEGRATING**

The most efficient environmental techniques or technologies in the renovation, development and operation of the castle and its estate

How do we make it ?

(2) By opening an **ecosystem** of nine poles reflecting the main human activities



(3) By **Founding the New World**

creation of an endowment found (future Foundation) gathering partners of various horizons committed to creating a sustainable world.

The fund will :

- be **entrusted** with an emphyteutic (long-term) lease on the estate ;
- be **responsible** for the ecological renovation of the estate and the castle ;
- a **majority** shareholder of the operating firm.



Our core values

EXPERIMENTATION

By enabling proponents of environmental solutions to install and test them, by having “life-size” feedback and a demonstrator for training for professionals

EDUCATION

By opening up to everyone the pleasure of living today the world of tomorrow, the joy of a newly found bond with nature and animals and the happiness of rediscovering the richness of their own humanity


INNOVATION

By making the Château du Nouveau Monde a place of emulation and invention where inventors, vacationers, researchers, curious, professionals, individuals meet and exchange ideas ...

SHARING

By giving everyone the opportunity to adopt new environmental solutions, to take those solutions away and to build together a new world

Our ambition



To show that another world **d** is possible for tomorrow,
where **e**cology does not mean deprivation,
where technology does not **m**ean destruction,
where nature is also our culture

A large, illuminated light sculpture featuring three elephants and a central tiered structure. The elephants are constructed from numerous small, glowing lights, giving them a textured, pixelated appearance. They are decorated with colorful patterns and have their trunks raised. The central structure is a tall, tiered tower, also made of lights, with a crown-like top. The entire sculpture is set against a dark background, with some bare tree branches visible. The lighting is vibrant, with a mix of purple, blue, green, and red hues.

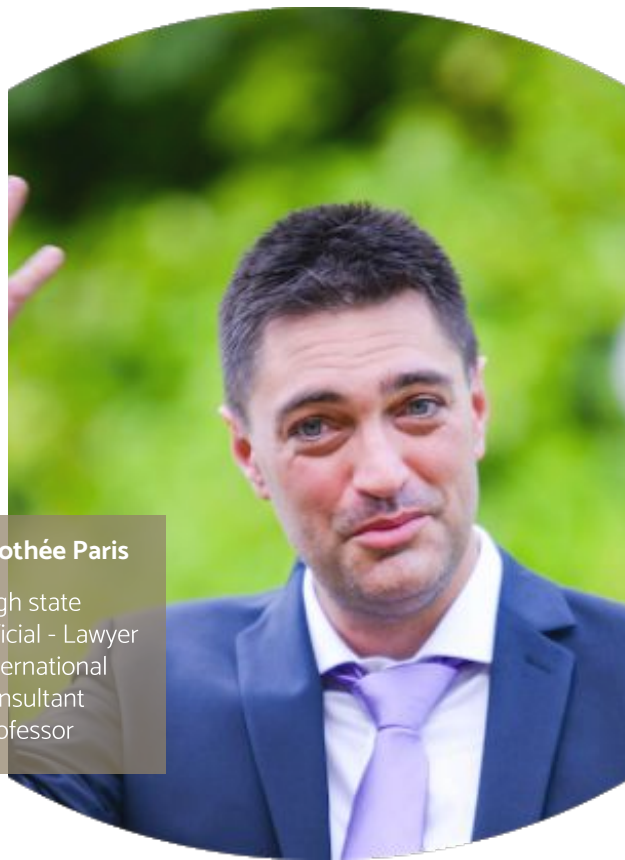
Our team

02



Xavier Carpentier

- Entrepreneur engaged in ecology
- passionate traveller
- Farmer's son



Timothée Paris

- High state official - Lawyer
- International consultant
- Professor



EURL Saget



FRAISSE SARL
menuiserie & ébénisterie



A future director

to take over operational management of the site

A future chef

to bring to the stars a family, vegetal and innovative restaurant



Our team of artists gardeners

committed to the principles of permaculture and agroforestry:

- ☐ Antoine Talin (Atelier alvéoles)
- ☐ Jean-Philippe Beau-Douëzy
- ☐ Eve Coignot

The New World Council

To make the project live and prepare the Endowment Fund and the future Foundation

A large network of supporters, inventors, initiators to ponder on the project, talk about it, challenge it... in short, to build it with us.

Personalities who offer their skills, experience and notoriety to support us, help us, advise us ...

Evaluate

Guide

Support

Advise

Prepare

The inspirers

The builders

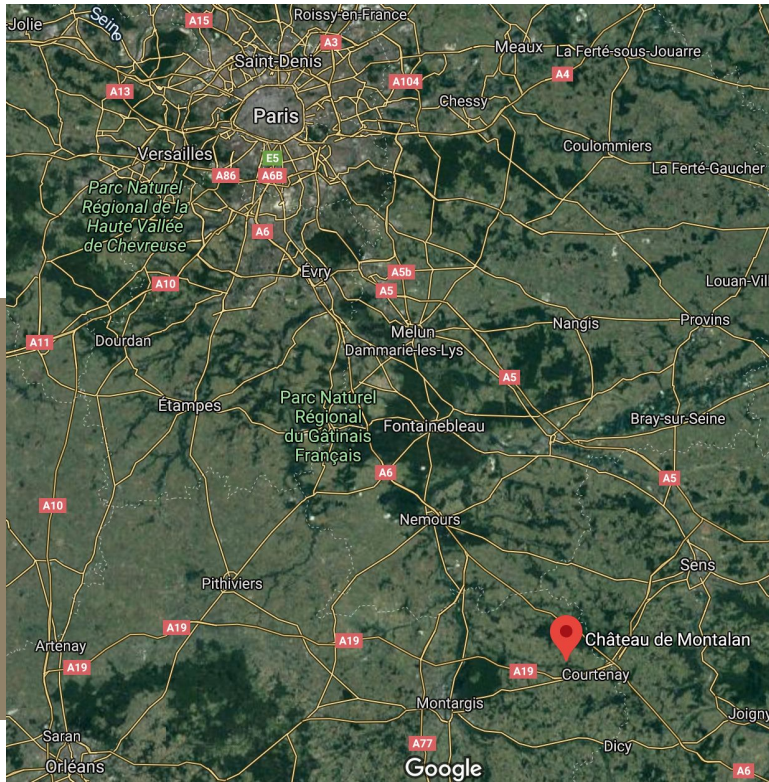
The makers



The place

03

The castle of Montalan





Forthcoming steps

04

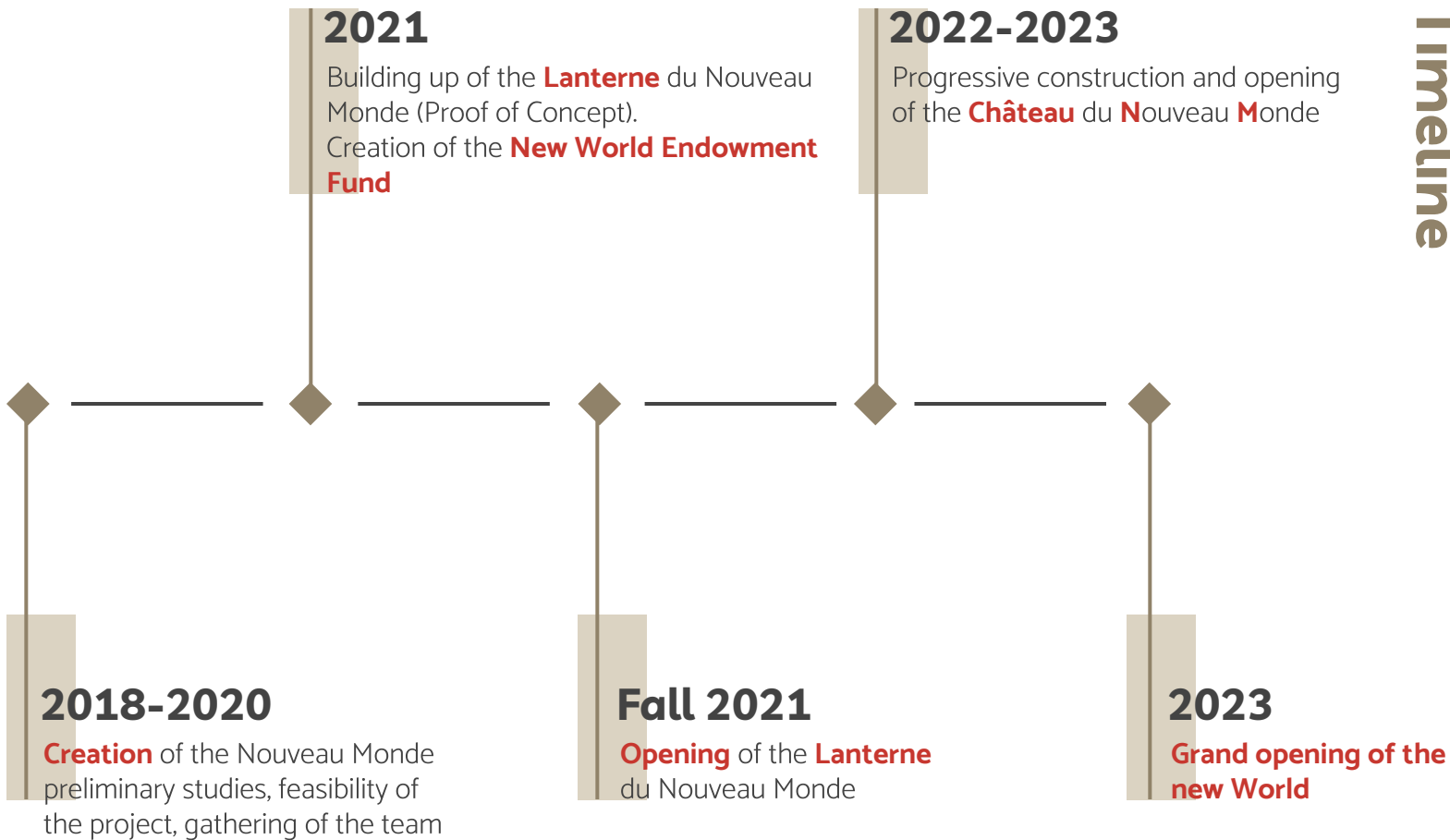
The Proof of Concept (POC)

The **Lanterne** du Nouveau Monde

- first high-end ecological accommodation to open: 5 rooms in the Lantern pavilion (former stables);
- a heated naturel swimming lane and a natural spa
- 1 hectare of paradisiac park and edible forest
- a permaculture vegetable garden
- first workshops of the Nouveau Monde (permaculture, cooking, personal development)



Timeline



Perspectives



05

Tomorrow

A trend for the future



The villa Shamengo

A house-school- laboratory of the new world

Bordeaux métropole, Bordeaux
Euratlantique, Ademe, Banque des
territoires, Eiffage



La Cité de l'arbre

A place to have fun, to wonder and to
learn

Dan Sprinceana, Engie fondation
d'entreprise, Atol, 1% for the planet,
Vrai, Sadec Akelys, le Cnam

La Villa M

A concept-place dedicated to
tomorrow's healthcare

Philippe Starck, Pasteur-Mutualité



Experiencing nature

A strong underlying momentum

1,6 billion ecological trips

Between 2018 and 2020 ([World Travel Organisation](#))



“eco-conviviality becomes a real priority”

for an ever-growing number of travelers
([Trivago Business Blog](#))



Eco-activism and a “less is more” mentality

“here are the biggest travel trends”
([Booking.com](#))



The local community

“The Château du Nouveau Monde is at the crossroads of two major territorial ambitions... the project receives all the support of the communities concerned” (Lionel de Rafelis, president of the 3CBO, Mayor of Saint-Hilaire-les-Andréis 2001-2020)”



The Department of the Loiret

“A global project that meets many of the expectations of today’s visitors ”(Frédéric Néraud, vice-president of the Council of the Department of the Loiret in charge of tourism



The Region of Centre-Val-de-Loire

“The theming of the product, as well as the consistency and complementarity of its components, are a strong asset of the project.”(Pre-diagnosis on the project performed for Dev’up, regional economic development agency)



Join Us!

06





**Our project will
also be yours**

By contributing to the New World Endowment Fund:

- you **invest** in a public utility project
- you **underline** your commitment to environmental protection
- you **experiment** on the estate with the environmental technologies you promote
- you **have** constant feedback on the ecological innovations and techniques used on the estate
- you **participate**, if you wish, to the board of directors and give orientations to the development of the project

Founders?



Associates ?

**Our dynamism
will also be yours**

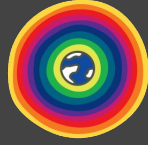


By investing with the operating company:

you **participate** in the growth of a business that closely links economy, innovation, humanity, nature and ecology
you **receive** the benefits of a company designing the future
you **innovate** to create new services and new products valued through a global and coherent project
you **disseminate** your knowledge, know-how and products through both a physical and a digital platform that guarantee their values and quality



**Our ambition
will also be yours**



**By installing your products, offering your services and
running the workshops and conference we offer:**

you **contribute** to building a new world with your
knowledge and experience
you **enable** the general public and other professionals to
experience the quality of your creations
you **boost** the dissemination of your products and
services through the quality label and the marketplace of
the Château du Nouveau Monde
you **share** your know-how, your techniques and your
values by running the workshops and conferences we
propose

Partners?



Thank you!

Curious?
Interested?
Willing to support us in our development? To encourage us?
Want to know more about us (financial plan, business plan, legal structure...)?

Please **contact** us !

Xavier: +33699781959 xavier@chateaudunouveau monde.fr

Timothée: +33601955040 timothee@chateaudunouveau monde.fr