



Renewable systems developer:

- Electricity & Water
 - Off-grid / Independent
 - Micro-grid
 - Grid-connected

Company founded in September 2016.

Blue Power Synergy bv
Nieuwstraat 12; Bredene 8450; T +32 494 33 58 26; yvon.timmerman@blue-power-synergy.com
BE 0662.725.477

Our products:

- * Container; Stand-alone with possibility to connect to grid.
 - 40' with 6 vertical wind turbines and $\pm 96\text{m}^2$ of solar panels
 - Production of Electricity
 - Production of Water
 - * Drinking water
 - * Industrial water (Agricultural for example)
- * Container; Stand-alone: charging station for electrical cars, ...



Our systems are developed for easy transport and deployment around the world.

Capacity: 25 to 30 Kwh average depending local wind and solar intensity

Energy storage: standard 37Kwh, Optional: 74Kwh

- Electrical production: 150 - 300 Kwh/ day (Continent - Tropics)

For water production:

- Desalination drinking water: 15 a 45m^3 /day (Continent – Tropics)
- Desalination industrial water: 90 a 300m^3 /day (Continent – Tropics)

Blue Power Synergy bv

Nieuwstraat 12; Bredene 8450; T +32 494 33 58 26; yvon.timmerman@blue-power-synergy.com

BE 0662.725.477



Vertical Wind turbine

Type Savonius

- Double bearing = no sound nuisance compared to classic turbines

Blue Power Synergy bv

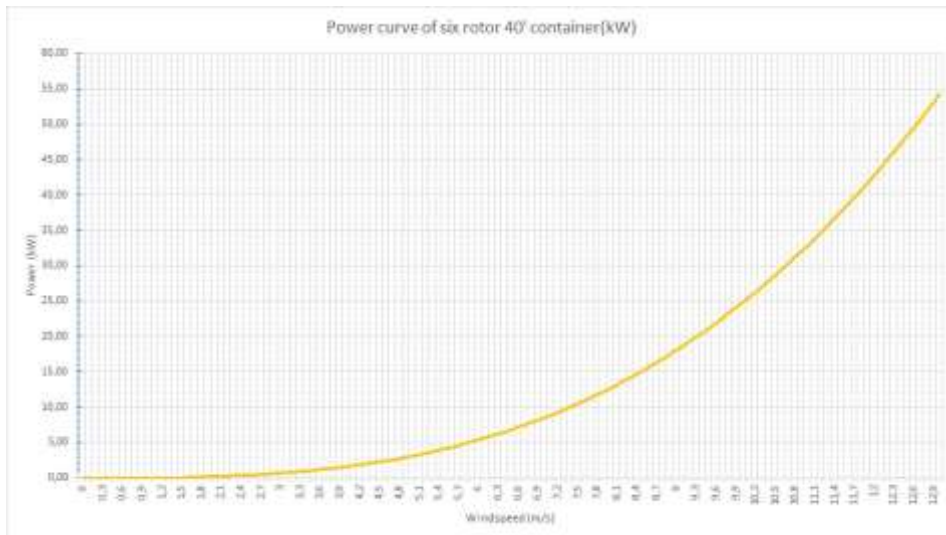
Nieuwstraat 12; Bredene 8450; T +32 494 33 58 26; yvon.timmerman@blue-power-synergy.com

BE 0662.725.477

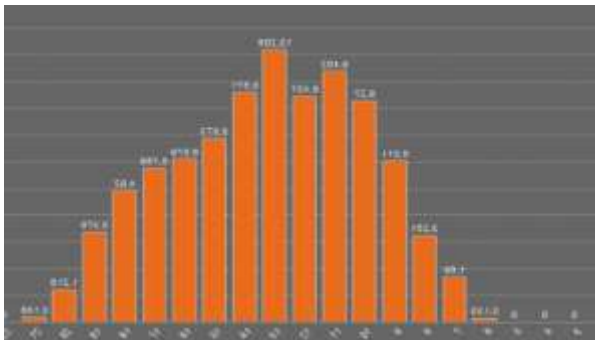
Techniques:

Installed windmill capacity: 18Kwh

Installed solar capacity: 18Kwh



Power curve for ideal wind angle



Solar Graph Belgium

Floating option:

Pontoon with or without water reservoirs.



Blue Power Synergy bv

Nieuwstraat 12; Bredene 8450; T +32 494 33 58 26; yvon.timmerman@blue-power-synergy.com

BE 0662.725.477

Application :

- * Remote regions
- * Developing regions
- * Smart cities & ports
- * Transition Fossil – Durable
- * Local production water / electricity



Why chose BPS?

- * Fully stand-alone system
- * Synergy Wind – Solar + Storage
- * Modular & mobile
- * No fuel used/required
- * Absolutely no pollutants
- * Easy transport: Container
- * Plug & Play

